

CDK3 polyclonal antibody

Catalog: BS60071

Host: Rabbit

Reactivity: Human, Mouse, Rat

BackGround:

Cell cycle progression is controlled in part by a family of cyclin proteins and cyclin dependent kinases (Cdk). Cdk proteins work in concert with the cyclins to phosphorylate key substrates involved in each phase of cell cycle progression. Another family of proteins, Cdk inhibitors, also plays a role in regulating cell cycle by binding to cyclin-Cdk complexes and modulating their activity. Several Cdk proteins have been identified, including Cdk2-Cdk8, PCTAIRE-1-3, PITALRE and PITSLRE. Cdk3, like Cdk2, is known to be required for the G1-S transition. Proteins involved in cell cycle control have become the subject of increased interest with regard to their potential roles in tumorigenesis. Both Cdk3 and Cdk2 have been mapped to regions of a human chromosome that may be altered in a variety of tumors.

Product:

Rabbit IgG, 1mg/ml in PBS with 0.02% sodium azide, 50% glycerol, pH7.2

Molecular Weight:

~ 35 kDa

Swiss-Prot:

Q00526

Purification&Purity:

The antibody was affinity-purified from rabbit antiserum by affinity-chromatography using epitope-specific immunogen and the purity is > 95% (by SDS-PAGE).

Applications:

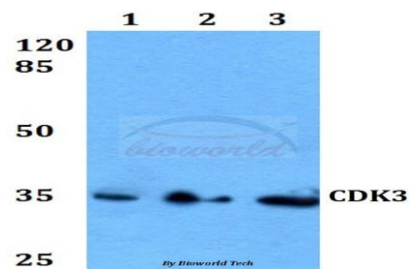
WB: 1:500~1:1000

Storage&Stability:

Store at 4 °C short term. Aliquot and store at -20 °C long term. Avoid freeze-thaw cycles.

Specificity:

CDK3 polyclonal antibody detects endogenous levels of CDK3 protein.

DATA:

Western blot (WB) analysis of CDK3 polyclonal antibody at 1:500 dilution

Lane1:HEK293T whole cell lysate

Lane2:Raw264.7 whole cell lysate

Lane3:PC12 whole cell lysate

Note:

For research use only, not for use in diagnostic procedure.

Bioworld Technology, Inc.

Add: 1660 South Highway 100, Suite 500 St. Louis Park, MN 55416, USA.

Email: info@bioworld.com

Tel: 6123263284

Fax: 6122933841

Bioworld technology, co. Ltd.

Add: No 9, weidi road Qixia District Nanjing, 210046, P. R. China.

Email: info@biogot.com

Tel: 0086-025-68037686

Fax: 0086-025-68035151