

CALY polyclonal antibody

Catalog: BS60076

Host: Rabbit

Reactivity: Human, Mouse, Rat

BackGround:

Calcyon is a single transmembrane protein that interacts with D1 dopamine receptors. Dopamine is a neurotransmitter that regulates synaptic transmission involved in learning and memory. D1 receptors, the most abundant dopamine receptor in the central nervous system, appear to modulate the activity of D2 dopamine receptors, mediate various behavioural responses, and regulate neuron growth and differentiation. Calcyon is present in neuronal cell bodies and processes of the cortex and hippocampus, and it is especially abundant in pyramidal neurons. Interaction of Calcyon with D1 receptors results in a release of intracellular calcium.

Product:

Rabbit IgG, 1mg/ml in PBS with 0.02% sodium azide, 50% glycerol, pH7.2

Molecular Weight:

~ 23 kDa

Swiss-Prot:

Q9NYX4

Purification&Purity:

The antibody was affinity-purified from rabbit antiserum by affinity-chromatography using epitope-specific immunogen and the purity is > 95% (by SDS-PAGE).

Applications:

WB: 1:500~1:1000

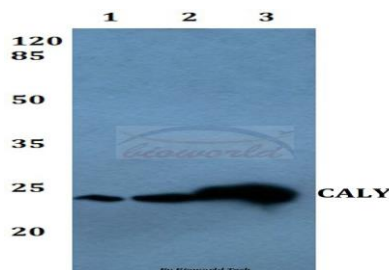
Storage&Stability:

Store at 4 °C short term. Aliquot and store at -20 °C long term. Avoid freeze-thaw cycles.

Specificity:

CALY polyclonal antibody detects endogenous levels of CALY protein.

DATA:



Western blot (WB) analysis of CALY polyclonal antibody at 1:500 dilution

Lane1:A549 whole cell lysate

Lane2:Raw264.7 whole cell lysate

Lane3:H9C2 whole cell lysate

Note:

For research use only, not for use in diagnostic procedure.

Bioworld Technology, Inc.

Add: 1660 South Highway 100, Suite 500 St. Louis Park, MN 55416, USA.

Email: info@bioworld.com

Tel: 6123263284

Fax: 6122933841

Bioworld technology, co. Ltd.

Add: No 9, weidi road Qixia District Nanjing, 210046, P. R. China.

Email: info@biogol.com

Tel: 0086-025-68037686

Fax: 0086-025-68035151