

CABP3 polyclonal antibody

Catalog: BS60125

Host: Rabbit

Reactivity: Human, Mouse, Rat

BackGround:

The calcium binding protein (CaBP) family shares much similarity to calmodulin. It has been shown that CaBP proteins can substitute functionally for, and probably augment the function of, calmodulin. Calcium binding proteins are a crucial part of calcium mediated cellular signal transduction in the central nervous system. There are several members of the family with varying expression patterns. CaBP1 and CaBP2 can be expressed as multiple, alternatively spliced variants in brain and retina. CaBP3, CaBP4 and CaBP 5 are restricted to retinal rod and cone cells.

Product:

Rabbit IgG, 1mg/ml in PBS with 0.02% sodium azide, 50% glycerol, pH7.2

Molecular Weight:

~ 20 kDa

Swiss-Prot:

Q9NZU6

Purification&Purity:

The antibody was affinity-purified from rabbit antiserum by affinity-chromatography using epitope-specific immunogen and the purity is > 95% (by SDS-PAGE).

Applications:

WB: 1:500~1:1000

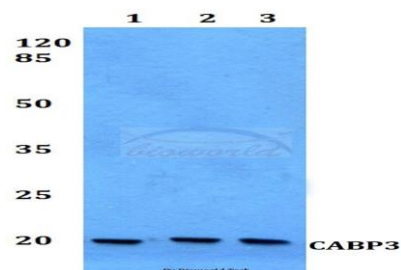
Storage&Stability:

Store at 4 °C short term. Aliquot and store at -20 °C long term. Avoid freeze-thaw cycles.

Specificity:

CABP3 polyclonal antibody detects endogenous levels of CABP3 protein.

DATA:



Western blot (WB) analysis of CABP3 polyclonal antibody at 1:500 dilution

Lane1:HEK293T whole cell lysate

Lane2:NIH-3T3 whole cell lysate

Lane3:H9C2 whole cell lysate

Note:

For research use only, not for use in diagnostic procedure.

Bioworld Technology, Inc.

Add: 1660 South Highway 100, Suite 500 St. Louis Park, MN 55416, USA.

Email: info@bioworld.com

Tel: 6123263284

Fax: 6122933841

Bioworld technology, co. Ltd.

Add: No 9, weidi road Qixia District Nanjing, 210046, P. R. China.

Email: info@biogot.com

Tel: 0086-025-68037686

Fax: 0086-025-68035151