

## CPO polyclonal antibody

Catalog: BS60130

Host: Rabbit

Reactivity: Human,Rat,Mouse

### BackGround:

Carboxypeptidase which preferentially cleaves C-terminal acidic residues from peptides and proteins. Can also cleave C-terminal hydrophobic amino acids, with a preference for small residues over large residues.

### Product:

1 mg/ml in Phosphate buffered saline (PBS) with 0.05% sodium azide, approx. pH 7.3.

### Molecular Weight:

~ 42 kDa

### Swiss-Prot:

Q8IVL8

### Purification&Purity:

The antibody was affinity-purified from rabbit antiserum by affinity-chromatography using epitope-specific immunogen and the purity is > 95% (by SDS-PAGE).

### Applications:

WB: 1:500~1:1000

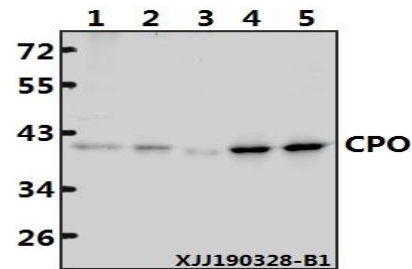
### Storage&Stability:

Store at 4 °C short term. Aliquot and store at -20 °C long term. Avoid freeze-thaw cycles.

### Specificity:

CPO polyclonal antibody detects endogenous levels of TPD52L2 protein.

### DATA:



Western blot (WB) analysis of CPO polyclonal antibody at 1:500 dilution

Lane1:DLD whole cell lysate(40 µg)

Lane2:C6 whole cell lysate(40 µg)

Lane3:CT-26 whole cell lysate(40 µg)

Lane4:U-87MG whole cell lysate(40 µg)

Lane5:MCF-7 whole cell lysate(40 µg)

### Note:

For research use only, not for use in diagnostic procedure.

### Bioworld Technology, Inc.

Add: 1660 South Highway 100, Suite 500 St. Louis Park, MN 55416, USA.

Email: [info@bioworld.com](mailto:info@bioworld.com)

Tel: 6123263284

Fax: 6122933841

### Bioworld technology, co. Ltd.

Add: No 9, weidi road Qixia District Nanjing, 210046, P. R. China.

Email: [info@biogot.com](mailto:info@biogot.com)

Tel: 0086-025-68037686

Fax: 0086-025-68035151