

DOCK11 polyclonal antibody

Catalog: BS60138-B

Host: Rabbit

Reactivity: Human,Rat,Mouse

BackGround:

Small GTPases of the Rho family, Rho, Rac, and Cdc42, are critical regulators of the actin cytoskeleton and many other cellular processes. Rho GTPases are activated by Dbl-homology (DH)-domain-containing guanine nucleotide exchange factors (GEFs). DOCK 11 (dedicator of cytokinesis 11), also known as ACG or ZIZ2 (zizimin2), is a 2073 amino acid protein belonging to the DOCK family of cytokinesis-regulating proteins that is mainly expressed in peripheral blood leukocytes. DOCK 11 functions as a GEF that binds and activates Cdc42 by exchanging bound GDP for free GTP. Cdc42 mediates cell polarity, gene expression, cell cycle progression and cell-cell contacts. Similar to other DOCK family members, DOCK 11 contains a PH domain and two internal DOCK homology regions designated DHR1 and DHR2.

Product:

Rabbit IgG, 1mg/ml in PBS with 0.02% sodium azide, 50% glycerol, pH7.4.

Molecular Weight:

~ 230 kDa

Swiss-Prot:

Q5JSL3

Purification&Purity:

The antibody was affinity-purified from rabbit antiserum by affinity-chromatography using epitope-specific immunogen and the purity is > 95% (by SDS-PAGE).

Applications:

WB: 1:2000~1:5000

IHC: 1:50~1:100

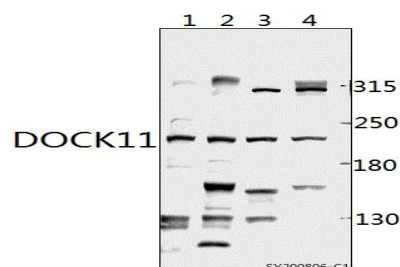
Storage&Stability:

Store at 4 °C short term. Aliquot and store at -20 °C long term. Avoid freeze-thaw cycles.

Specificity:

DOCK11 polyclonal antibody detects endogenous levels of DOCK11 protein.

DATA:



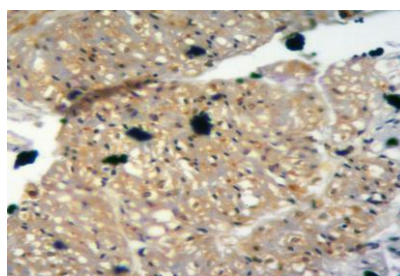
Western blot (WB) analysis of DOCK11 polyclonal antibody at 1:2000 dilution

Lane1:C6 whole cell lysate(40ug)

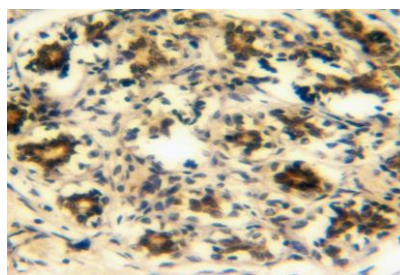
Lane2:CT-26 whole cell lysate(40ug)

Lane3:EC9706 whole cell lysate(40ug)

Lane4:U-87MG whole cell lysate(40ug)



Immunohistochemistry of paraffin-embedded Human breast cancer using DOCK11 antibody at dilution of 1:50 (40x lens).



Immunohistochemistry of paraffin-embedded Human breast cancer using DOCK11 antibody at dilution of 1:50 (40x lens).

Note:

For research use only, not for use in diagnostic procedure.

Bioworld Technology, Inc.

Add: 1660 South Highway 100, Suite 500 St. Louis Park, MN 55416, USA.

Email: info@bioworld.com

Tel: 6123263284

Fax: 6122933841

Bioworld technology, co. Ltd.

Add: No 9, weidi road Qixia District Nanjing, 210046, P. R. China.

Email: info@biogot.com

Tel: 0086-025-68037686

Fax: 0086-025-68035151



PRODUCT DATA SHEET

Bioworld Technology, Inc.

Bioworld Technology, Inc.

Add: 1660 South Highway 100, Suite 500 St. Louis Park,
MN 55416, USA.

Email: info@bioworld.com

Tel: 6123263284

Fax: 6122933841

Bioworld technology, co. Ltd.

Add: No 9, weidi road Qixia District Nanjing, 210046,
P. R. China.

Email: info@biogot.com

Tel: 0086-025-68037686

Fax: 0086-025-68035151