

CD248 polyclonal antibody

Catalog: BS60152

Host: Rabbit

Reactivity: Human, Mouse, Rat

BackGround:

Tumor endothelial marker 1 (TEM1/Endosialin) is a heavily glycosylated, type I transmembrane C-type lectin-like receptor of the Ras superfamily expressed in the vascular endothelium and on fibroblast-like cells in developing organs. Expression of TEM1 largely disappears in adulthood. TEM1 is structurally related to thrombomodulin and complement receptor C1qRp. It consists of three EGF-like domains, a C-type lectin domain and a Sushi domain. TEM1 is highly upregulated in tumor endothelium and is known to function in tumor growth and progression. For this reason TEM1 is a major target in anti-angiogenic tumor therapy. TEM1 may be responsible for concentrating liposomes on the surface of target cells and promoting their fusion with the cell membrane.

Product:

Rabbit IgG, 1mg/ml in PBS with 0.02% sodium azide, 50% glycerol, pH7.2

Molecular Weight:

~ 50, 80 kDa

Swiss-Prot:

Q9HCU0

Purification&Purity:

The antibody was affinity-purified from rabbit antiserum by affinity-chromatography using epitope-specific immunogen and the purity is > 95% (by SDS-PAGE).

Applications:

WB: 1:500~1:1000

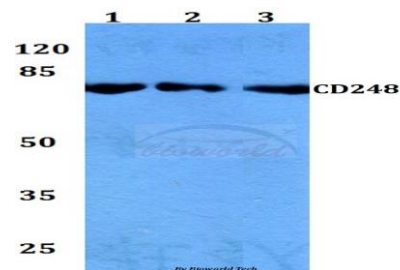
Storage&Stability:

Store at 4 °C short term. Aliquot and store at -20 °C long term. Avoid freeze-thaw cycles.

Specificity:

CD248 polyclonal antibody detects endogenous levels of Endosialin protein.

DATA:



Western blot (WB) analysis of CD248 polyclonal antibody at 1:500 dilution

Lane1:HEK293T whole cell lysate

Lane2:NIH-3T3 whole cell lysate

Lane3:H9C2 whole cell lysate

Note:

For research use only, not for use in diagnostic procedure.

Bioworld Technology, Inc.

Add: 1660 South Highway 100, Suite 500 St. Louis Park, MN 55416, USA.

Email: info@bioworld.com

Tel: 6123263284

Fax: 6122933841

Bioworld technology, co. Ltd.

Add: No 9, weidi road Qixia District Nanjing, 210046, P. R. China.

Email: info@biogot.com

Tel: 0086-025-68037686

Fax: 0086-025-68035151