

MUC6 polyclonal antibody

Catalog: BS60178

Host: Rabbit

Reactivity: Human, Mouse, Rat

Background:

Mucin 6 (also designated MUC 6 and gastricmucin) is a large glycoprotein that plays a major role in the protection of the gastrointestinal tract. MUC6 carries GlcNAc α 1 \rightarrow 4Gal β \rightarrow R structures, indicating that α 1, 4-N-acetylglucosaminyltransferase is important to the formation of the mucous glycoproteins in vivo. Mucin 6 expression is highest in the stomach and gall bladder, with lower expression in the terminal ileum and right colon. In gastric cancer, Mucin 6 has an altered expression. In normal stomach, Mucin 6 apomucin is associated with Lewistype 2; Mucin 6 is also expressed in gastric metaplasia, duodenum and pancreas. Mucin 6 is a secretory mucin, located in the deeper mucosal folds of human gall bladder, and its expression is altered with increasing degrees of inflammation. Mucin 6 mRNA is expressed transiently in the nephrogenic zone of the kidney in the early mid-trimester of development, and Mucin 6 glycoprotein is expressed in the epithelium of ureteric buds and collecting ducts, but absent from adult kidney. Proliferating bile ductular cells express Mucin 6 apomucin in diseased liver, especially in chronic viral hepatitis with active necroinflammation, suggesting that this secreted mucin acts as a cytoprotective agent and represents a phenotype of reactive biliary epithelium in chronic viral hepatitis.

Product:

Rabbit IgG, 1mg/ml in PBS with 0.02% sodium azide, 50% glycerol, pH 7.2

Molecular Weight:

~ 270 kDa

Swiss-Prot:

Q6W4X9

Purification & Purity:

The antibody was affinity-purified from rabbit antiserum by affinity-chromatography using epitope-specific immunogen and the purity is > 95% (by SDS-PAGE).

Applications:

WB: 1:500~1:1000

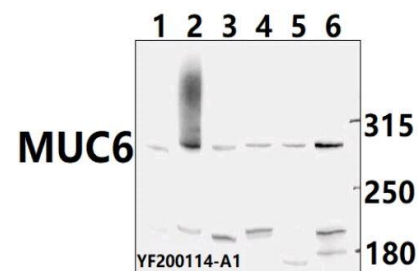
Storage & Stability:

Store at 4 °C short term. Aliquot and store at -20 °C long term. Avoid freeze-thaw cycles.

Specificity:

MUC6 polyclonal antibody detects endogenous levels of MUC6 protein.

DATA:



Western blot (WB) analysis of MUC6 pAb at 1:500 dilution

Lane 1: HCT116 whole cell lysate (40ug)

Lane 2: Aml-12 whole cell lysate (40ug)

Lane 3: Hela whole cell lysate (40ug)

Lane 4: A2780 whole cell lysate (40ug)

Lane 5: The Fallopian tube tissue lysate of Mouse (40ug)

Lane 6: HepG2 whole cell lysate (40ug)

Note:

For research use only, not for use in diagnostic procedure.

Bioworld Technology, Inc.

Add: 1660 South Highway 100, Suite 500 St. Louis Park, MN 55416, USA.

Email: info@bioworld.com

Tel: 6123263284

Fax: 6122933841

Bioworld technology, co. Ltd.

Add: No 9, weidi road Qixia District Nanjing, 210046, P. R. China.

Email: info@biogot.com

Tel: 0086-025-68037686

Fax: 0086-025-68035151