

BMS1 polyclonal antibody

Catalog: BS60236

Host: Rabbit

Reactivity: Human, Mouse, Rat

BackGround:

BMS1 (Ribosome biogenesis protein BMS1 homolog) is a 1,282 amino acid protein encoded by the human gene BMS1. BMS1 is a nuclear protein that belongs to the BMS1/TSR1 family (BMS1 subfamily). BMS1 is believed to act as a molecular switch during maturation of the 40S ribosomal subunit in the nucleolus. The 40S ribosomal subunit is an important member of the 80S ribosome complex, which also includes initiator tRNA and a 60S ribosomal subunit. The 80S ribosome is assembled by eukaryotic initiation factors (eIFs) at the initiation codon of mRNA in order to begin translation initiation. The joining of these ribosomal subunits requires eIF5B.

Product:

Rabbit IgG, 1mg/ml in PBS with 0.02% sodium azide, 50% glycerol, pH7.2

Molecular Weight:

~ 146 kDa

Swiss-Prot:

Q14692

Purification&Purity:

The antibody was affinity-purified from rabbit antiserum by affinity-chromatography using epitope-specific immunogen and the purity is > 95% (by SDS-PAGE).

Applications:

WB: 1:500~1:1000

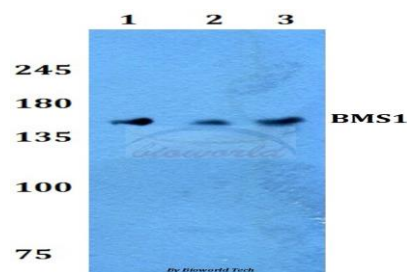
Storage&Stability:

Store at 4 °C short term. Aliquot and store at -20 °C long term. Avoid freeze-thaw cycles.

Specificity:

BMS1 polyclonal antibody detects endogenous levels of BMS1 protein.

DATA:



Western blot (WB) analysis of BMS1 polyclonal antibody at 1:500 dilution

Lane1:MCF-7 whole cell lysate

Lane2:Raw264.7 whole cell lysate

Lane3:H9C2 whole cell lysate

Note:

For research use only, not for use in diagnostic procedure.

Bioworld Technology, Inc.

Add: 1660 South Highway 100, Suite 500 St. Louis Park, MN 55416, USA.

Email: info@bioworld.com

Tel: 6123263284

Fax: 6122933841

Bioworld technology, co. Ltd.

Add: No 9, weidi road Qixia District Nanjing, 210046, P. R. China.

Email: info@biogot.com

Tel: 0086-025-68037686

Fax: 0086-025-68035151