

CIC polyclonal antibody

Catalog: BS60283

Host: Rabbit

Reactivity: Human, Mouse, Rat

BackGround:

Capicua, also referred to as CIC, is the mammalian ortholog of the drosophila Cic gene and is part of the HMG-box protein superfamily. Expressed primarily in the fetal brain, Capicua functions as a transcriptional repressor and is involved in the development of the nervous system through interaction with the ATXN1 protein. When ATXN1 assembles into stable complexes, it directly binds Capicua, thereby mediating both the activity and expression of Capicua. When Capicua is active, it is able to interact with other developmental proteins to restrict the growth of granule cells and regulate normal neuronal development. Disruptions in the the association of Capicua with proteins such as ATXN1 are thought to cause medulloblastoma, the most common form of perdiatric brain tumor arising from irregular growth of granule cells.

Product:

Rabbit IgG, 1mg/ml in PBS with 0.02% sodium azide, 50% glycerol, pH7.2

Molecular Weight:

~ 164 kDa

Swiss-Prot:

Q96RK0

Purification&Purity:

The antibody was affinity-purified from rabbit antiserum by affinity-chromatography using epitope-specific immunogen and the purity is > 95% (by SDS-PAGE).

Applications:

WB: 1:500~1:1000

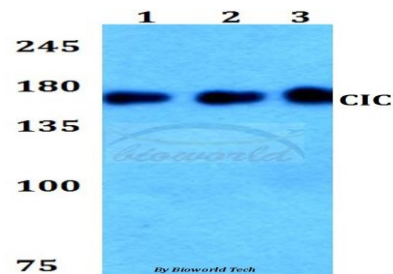
Storage&Stability:

Store at 4 °C short term. Aliquot and store at -20 °C long term. Avoid freeze-thaw cycles.

Specificity:

CIC polyclonal antibody detects endogenous levels of CIC protein.

DATA:



Western blot (WB) analysis of CIC polyclonal antibody at 1:500 dilution

Lane1:HEK293T whole cell lysate

Lane2:Raw264.7 whole cell lysate

Lane3:PC12 whole cell lysate

Note:

For research use only, not for use in diagnostic procedure.

Bioworld Technology, Inc.

Add: 1660 South Highway 100, Suite 500 St. Louis Park, MN 55416, USA.

Email: info@bioworld.com

Tel: 6123263284

Fax: 6122933841

Bioworld technology, co. Ltd.

Add: No 9, weidi road Qixia District Nanjing, 210046, P. R. China.

Email: info@biogot.com

Tel: 0086-025-68037686

Fax: 0086-025-68035151