

CCBE1 polyclonal antibody

Catalog: BS60287

Host: Rabbit

Reactivity: Human, Mouse, Rat

BackGround:

The gene encoding CCBE1 (Collagen and calcium-binding EGF domain-containing protein 1) is located on chromosome 18 in a region that is frequently found to be deleted in breast and prostate cancers. CCBE1 is a 406 amino acid secreted protein that contains two collagen-like domains and one calcium-binding epidermal growth factor (EGF-like) domain. In general, EGF-like domains include six cysteine residues that are usually involved in disulfide bonds. Calcium-binding EGF-like domains are subject to amino acid substitutions that disrupt their structure or calcium affinity, therefore altering protein function. Downregulation of the gene encoding CCBE1 is observed with high frequency in breast cancer, suggesting that loss of CCBE1 results in changes in cell adhesion and mobility due to its characterization as an extracellular protein. There are three named isoforms of CCBE1 which are produced as a result of alternative splicing events.

Product:

Rabbit IgG, 1mg/ml in PBS with 0.02% sodium azide, 50% glycerol, pH7.2

Molecular Weight:

~ 44 kDa

Swiss-Prot:

Q6UXH8

Purification&Purity:

The antibody was affinity-purified from rabbit antiserum by affinity-chromatography using epitope-specific im-

munogen and the purity is > 95% (by SDS-PAGE).

Applications:

WB: 1:500~1:1000

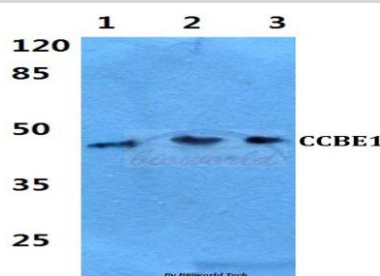
Storage&Stability:

Store at 4 °C short term. Aliquot and store at -20 °C long term. Avoid freeze-thaw cycles.

Specificity:

CCBE1 polyclonal antibody detects endogenous levels of CCBE1 protein.

DATA:



Western blot (WB) analysis of CCBE1 polyclonal antibody at 1:500 dilution

Lane1:Hela cell lysate

Lane2:sp2/0 cell lysate

Lane3:PC12 cell lysate

Note:

For research use only, not for use in diagnostic procedure.

Bioworld Technology, Inc.

Add: 1660 South Highway 100, Suite 500 St. Louis Park, MN 55416, USA.

Email: info@bioworld.com

Tel: 6123263284

Fax: 6122933841

Bioworld technology, co. Ltd.

Add: No 9, weidi road Qixia District Nanjing, 210046, P. R. China.

Email: info@biogot.com

Tel: 0086-025-68037686

Fax: 0086-025-68035151