

## CFC1B/CFC1 polyclonal antibody

Catalog: BS60336

Host: Rabbit

Reactivity: Human, Mouse, Rat

### Background:

Cryptic is a 224 amino acid member of the epidermal growth factor-Cripto-1/ FRL1/cryptic family that consists of extracellular and cell-associated proteins which function as co-receptors for the transforming growth factor b subfamily of proteins. Cryptic is involved in the appropriate establishment of the left-right axis of the organism, and it may play a role in the development of mesoderm and/or neural patterning during gastrulation. Loss-of-function mutations in CFC1, the gene encoding for Cryptic, are associated with human left-right laterality defects. Defects in CFC1 also cause visceral heterotaxy (HTX2), an autosomal disease characterized by a variable group of congenital anomalies that include complex cardiac malformations such as conotruncal heart malformations that may lead to cardiac outflow tract defects, pulmonary atresia, double-outlet right ventricle, truncus arteriosus communis and aortic arch anomalies.

### Product:

Rabbit IgG, 1mg/ml in PBS with 0.02% sodium azide, 50% glycerol, pH7.2

### Molecular Weight:

~ 20 kDa

### Swiss-Prot:

P0CG36/P0CG37

### Purification&Purity:

The antibody was affinity-purified from rabbit antiserum by affinity-chromatography using epitope-specific im-

munogen and the purity is > 95% (by SDS-PAGE).

### Applications:

WB: 1:500~1:1000

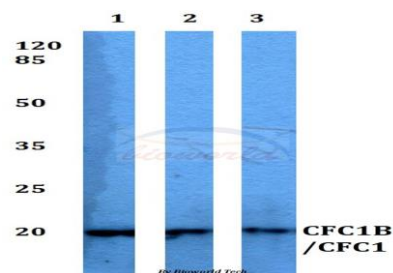
### Storage&Stability:

Store at 4 °C short term. Aliquot and store at -20 °C long term. Avoid freeze-thaw cycles.

### Specificity:

CFC1B/CFC1 polyclonal antibody detects endogenous levels of CFC1B/CFC1 protein.

### DATA:



Western blot (WB) analysis of CFC1B/CFC1 polyclonal antibody at 1:500 dilution

Lane1:HEK293T whole cell lysate

Lane2:Raw264.7 whole cell lysate

Lane3:H9C2 whole cell lysate

### Note:

For research use only, not for use in diagnostic procedure.

### Bioworld Technology, Inc.

Add: 1660 South Highway 100, Suite 500 St. Louis Park, MN 55416, USA.

Email: [info@bioworld.com](mailto:info@bioworld.com)

Tel: 6123263284

Fax: 6122933841

### Bioworld technology, co. Ltd.

Add: No 9, weidi road Qixia District Nanjing, 210046, P. R. China.

Email: [info@biogot.com](mailto:info@biogot.com)

Tel: 0086-025-68037686

Fax: 0086-025-68035151