

CLEC14A polyclonal antibody

Catalog: BS60339

Host: Rabbit

Reactivity: Human, Mouse, Rat

BackGround:

CLEC-14A (C-type lectin domain family 14 member A), also known as EGFR-5 (epidermal growth factor receptor 5) or CEG1, is a 490 amino acid single-pass type I membrane protein that contains one C-type lectin domain and an EGF-like domain. The gene encoding CLEC-14A maps to human chromosome 14, which houses over 700 genes and comprises nearly 3.5% of the human genome. Chromosome 14 encodes the presenilin 1 (PSEN1) gene, which is one of the three key genes associated with the development of Alzheimer's disease (AD). The SERPINA1 gene is also located on chromosome 14 and, when defective, leads to the genetic disorder α 1-antitrypsin deficiency, which is characterized by severe lung complications and liver dysfunction.

Product:

Rabbit IgG, 1mg/ml in PBS with 0.02% sodium azide, 50% glycerol, pH7.2

Molecular Weight:

~ 62 kDa

Swiss-Prot:

Q86T13

Purification&Purity:

The antibody was affinity-purified from rabbit antiserum by affinity-chromatography using epitope-specific immunogen and the purity is > 95% (by SDS-PAGE).

Applications:

WB: 1:500~1:1000

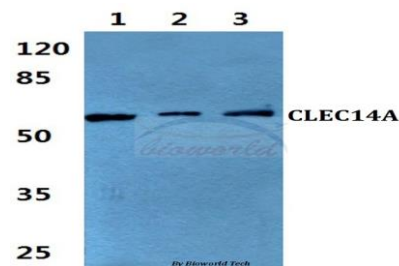
Storage&Stability:

Store at 4 °C short term. Aliquot and store at -20 °C long term. Avoid freeze-thaw cycles.

Specificity:

CLEC14A polyclonal antibody detects endogenous levels of CLEC14A protein.

DATA:



Western blot (WB) analysis of CLEC14A polyclonal antibody at 1:500 dilution

Lane1:HEK293T cell lysate

Lane2:Raw264.7 cell lysate

Lane3:Rat liver tissue lysate

Note:

For research use only, not for use in diagnostic procedure.

Bioworld Technology, Inc.

Add: 1660 South Highway 100, Suite 500 St. Louis Park, MN 55416, USA.

Email: info@bioworld.com

Tel: 6123263284

Fax: 6122933841

Bioworld technology, co. Ltd.

Add: No 9, weidi road Qixia District Nanjing, 210046, P. R. China.

Email: info@biogot.com

Tel: 0086-025-68037686

Fax: 0086-025-68035151