

CD3G polyclonal antibody

Catalog: BS60356

Host: Rabbit

Reactivity: Human, Mouse, Rat

Background:

The T cell antigen receptor (TCR) recognizes foreign antigens and translates such recognition events into intracellular signals that elicit a change in the cell from a dormant to an activated state. Much of this signaling process can be attributed to a multisubunit complex of proteins that associates directly with the TCR. This complex has been designated CD3 (cluster of differentiation 3). It is composed of five invariant polypeptide chains that associate to form three dimers: a heterodimer of γ and ϵ chains ($\gamma\epsilon$), a heterodimer of δ and ϵ chains ($\delta\epsilon$) and a homodimer of two ζ chains ($\zeta\zeta$) or a heterodimer of ζ and η chains ($\zeta\eta$). The ζ and η chains are encoded by the same gene but differ in their carboxyl-terminal ends due to an alternative splicing event. The γ , ϵ and δ chains each contain a single copy of a conserved immunoreceptor tyrosine-based activation motif (ITAM). In contrast, the ζ chain contains three consecutive copies of the same motif. Phosphorylated ITAMs act as docking sites for protein kinases such as ZAP-70 and Syk and are also capable of regulating their kinase activity. The crystal structure of ZAP-70's SH2 domains bound to the ζ chain ITAMs has been solved.

Product:

Rabbit IgG, 1mg/ml in PBS with 0.02% sodium azide, 50% glycerol, pH 7.2

Molecular Weight:

~ 20 kDa

Swiss-Prot:

P09693

Purification & Purity:

The antibody was affinity-purified from rabbit antiserum by affinity-chromatography using epitope-specific immunogen and the purity is > 95% (by SDS-PAGE).

Applications:

WB: 1:500~1:1000

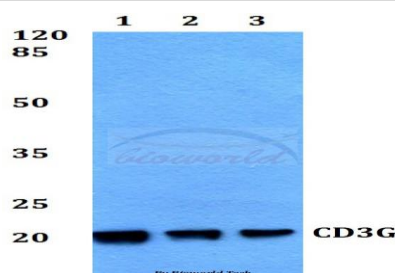
Storage & Stability:

Store at 4 °C short term. Aliquot and store at -20 °C long term. Avoid freeze-thaw cycles.

Specificity:

CD3G polyclonal antibody detects endogenous levels of CD3G protein.

DATA:



Western blot (WB) analysis of CD3G polyclonal antibody at 1:500 dilution

Lane 1: HEK293T whole cell lysate

Lane 2: Raw264.7 whole cell lysate

Lane 3: H9C2 whole cell lysate

Note:

For research use only, not for use in diagnostic procedure.

Bioworld Technology, Inc.

Add: 1660 South Highway 100, Suite 500 St. Louis Park, MN 55416, USA.

Email: info@bioworld.com

Tel: 6123263284

Fax: 6122933841

Bioworld technology, co. Ltd.

Add: No 9, weidi road Qixia District Nanjing, 210046, P. R. China.

Email: info@biogot.com

Tel: 0086-025-68037686

Fax: 0086-025-68035151