

C4A/C4B polyclonal antibody

Catalog: BS60394

Host: Rabbit

Reactivity: Human, Mouse, Rat

Background:

The complement component proteins C3, C4 and C5 are potent anaphylatoxins that are released during complement activation, a system of ligand-surface protein interactions specific to cells of hematopoietic lineage. These proteins belong to the α 2-macroglobulin family, but retain distinctive features including an anaphylatoxin domain and a netrin (NTR) domain. The human C4 gene is polymorphic at two loci, C4A and C4B, mapping to chromosome 6p21.32. C4A

expresses the Rodgers (Rg) blood group Ag, while C4B expresses the Chido (Ch) blood group Ag. C4 is expressed as a precursor that is cleaved into α , β and γ chains, all of which are non-identical cleavage products. The α chain of C4 may be cleaved to produce an acidic isotype, C4a, which reacts with amino groups, and a basic isotype, C4b, which reacts with hydroxyl groups. Deficiency in the C4 gene is associated with autoimmune or immune complex disorders, such as systemic lupus erythematosus.

Product:

Rabbit IgG, 1mg/ml in PBS with 0.02% sodium azide, 50% glycerol, pH 7.2

Molecular Weight:

~ 193 kDa

Swiss-Prot:

P0C0L4/P0C0L5

Purification & Purity:

The antibody was affinity-purified from rabbit antiserum by affinity-chromatography using epitope-specific im-

munogen and the purity is > 95% (by SDS-PAGE).

Applications:

WB: 1:500~1:1000

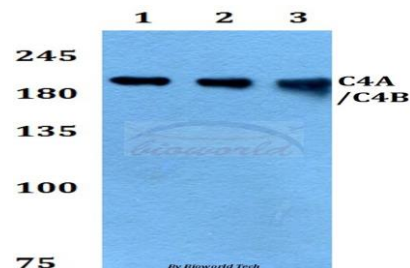
Storage & Stability:

Store at 4 °C short term. Aliquot and store at -20 °C long term. Avoid freeze-thaw cycles.

Specificity:

C4A/C4B polyclonal antibody detects endogenous levels of C4A and C4B protein.

DATA:



Western blot (WB) analysis of C4A/C4B polyclonal antibody at 1:500 dilution

Lane 1: A549 whole cell lysate

Lane 2: Raw264.7 whole cell lysate

Lane 3: PC12 whole cell lysate

Note:

For research use only, not for use in diagnostic procedure.

Bioworld Technology, Inc.

Add: 1660 South Highway 100, Suite 500 St. Louis Park, MN 55416, USA.

Email: info@bioworld.com

Tel: 6123263284

Fax: 6122933841

Bioworld technology, co. Ltd.

Add: No 9, weidi road Qixia District Nanjing, 210046, P. R. China.

Email: info@biogot.com

Tel: 0086-025-68037686

Fax: 0086-025-68035151