

CRP polyclonal antibody

Catalog: BS60395

Host: Rabbit

Reactivity: Human, Mouse, Rat

BackGround:

Pentraxins, which include C-reactive protein (CRP) and serum amyloid P component (SAP), are prototypic acute phase proteins. CRP and SAP are produced by liver epithelial cells and are characterized by a cyclic pentameric structure and calcium-dependent ligand binding. IL-6 is the major inducer of human CRP gene, and IL-1 and steroids can enhance this induction. Testosterone is required for the expression of CRP transgene in vivo, whereas testosterone is not required for expression of the SAP gene. During the acute-phase response, cytokine C5a acts with IL-6 and/or IL-1b to promote upregulation of the CRP and SAP genes. Both Stat3 and C/EBP are involved in mouse SAP gene expression, but only Stat3 is involved in mouse CRP gene expression. SAP binds to a variety of molecules, including autoantigens and chromatin.

Product:

Rabbit IgG, 1mg/ml in PBS with 0.02% sodium azide, 50% glycerol, pH7.2

Molecular Weight:

~ 25 kDa

Swiss-Prot:

P02741

Purification&Purity:

The antibody was affinity-purified from rabbit antiserum by affinity-chromatography using epitope-specific immunogen and the purity is > 95% (by SDS-PAGE).

Applications:

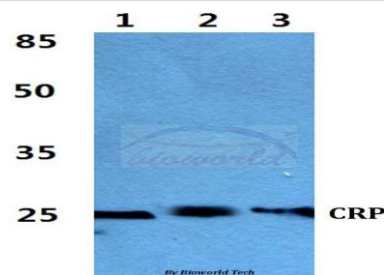
WB: 1:500~1:1000

Storage&Stability:

Store at 4 °C short term. Aliquot and store at -20 °C long term. Avoid freeze-thaw cycles.

Specificity:

CRP polyclonal antibody detects endogenous levels of CRP protein.

DATA:

Western blot (WB) analysis of CRP polyclonal antibody at 1:500 dilution

Lane1:Hela cell lysate

Lane2:Mouse liver tissue lysate

Lane3:H9C2 cell lysate

Note:

For research use only, not for use in diagnostic procedure.

Bioworld Technology, Inc.

Add: 1660 South Highway 100, Suite 500 St. Louis Park, MN 55416, USA.

Email: info@bioworld.com

Tel: 6123263284

Fax: 6122933841

Bioworld technology, co. Ltd.

Add: No 9, weidi road Qixia District Nanjing, 210046, P. R. China.

Email: info@biogot.com

Tel: 0086-025-68037686

Fax: 0086-025-68035151