

DIAPH2 polyclonal antibody

Catalog: BS60413

Host: Rabbit

Reactivity: Human, Mouse, Rat

Background:

Dia 1 (also designated p140mDia) and Dia 2 (also designated p134mDia 2), mammalian homologs of the *Drosophila* diaphanous gene, belong to a family of formin homology (FH) proteins which are characterized by having tandemly aligned FH1 and FH2 domains in their carboxy terminal regions. The amino terminus of inactivated Dia 1 binds to the FH1 and FH2 domains and is activated when GTP-bound Rho disrupts the intramolecular interaction of Dia 1 and converts it to an open conformation. Once activated, Dia 1 co-localizes with Profilin and RhoA in dynamic plasma membrane structures and induces the formation of stress fibers in conjunction with the ROCK-mediated signaling pathway. However, Dia 1 and ROCK activities antagonize each other in order to determine the thickness and density of the stress fibers formed.

Product:

Rabbit IgG, 1mg/ml in PBS with 0.02% sodium azide, 50% glycerol, pH7.2

Molecular Weight:

~ 130 kDa

Swiss-Prot:

O60879

Purification&Purity:

The antibody was affinity-purified from rabbit antiserum by affinity-chromatography using epitope-specific immunogen and the purity is > 95% (by SDS-PAGE).

Applications:

WB: 1:500~1:1000

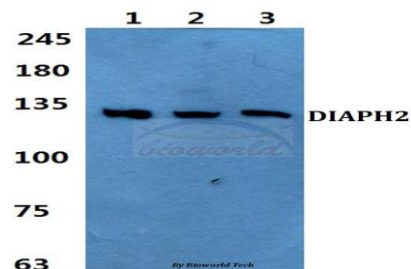
Storage&Stability:

Store at 4 °C short term. Aliquot and store at -20 °C long term. Avoid freeze-thaw cycles.

Specificity:

DIAPH2 polyclonal antibody detects endogenous levels of DIAPH2 protein.

DATA:



Western blot (WB) analysis of DIAPH2 polyclonal antibody at 1:500 dilution

Lane1:Hela cell lysate

Lane2:sp2/0 cell lysate

Lane3:PC12 cell lysate

Note:

For research use only, not for use in diagnostic procedure.

Bioworld Technology, Inc.

Add: 1660 South Highway 100, Suite 500 St. Louis Park, MN 55416, USA.

Email: info@bioworld.com

Tel: 6123263284

Fax: 6122933841

Bioworld technology, co. Ltd.

Add: No 9, weidi road Qixia District Nanjing, 210046, P. R. China.

Email: info@biogot.com

Tel: 0086-025-68037686

Fax: 0086-025-68035151