

CLEC6A polyclonal antibody

Catalog: BS60545

Host: Rabbit

Reactivity: Human, Mouse, Rat

BackGround:

Together, Dectin-1 and Dectin-2 make up the unique sub-family of dendritic cell-associated C-type lectins. Dectin-2 is expressed on antigen-presenting cells, where it interacts with its putative ligands on T cells. That interaction may deliver co-stimulatory signals in naive T cells. Dectin-2 expression is upregulated during monocyte activation and maturation at inflammatory lesions. Broadband UV-B upregulates Dectin-2 expression in Langerhans cells by activating the Dectin-2 gene promoter, suggesting that this protein plays a crucial role in the mediation of UV-induced immunosuppression. In cattle, Dectin-2 expressed by dendritic cells may also play a role in the recognition of invading antigens in lymph nodes. Dectin-2 functions as a pattern recognition receptor for fungi that activates signaling through FcR α to induce innate immune responses.

Product:

Rabbit IgG, 1mg/ml in PBS with 0.02% sodium azide, 50% glycerol, pH7.2

Molecular Weight:

~ 24 kDa

Swiss-Prot:

Q6EIG7

Purification&Purity:

The antibody was affinity-purified from rabbit antiserum by affinity-chromatography using epitope-specific immunogen and the purity is > 95% (by SDS-PAGE).

Applications:

WB: 1:500~1:1000

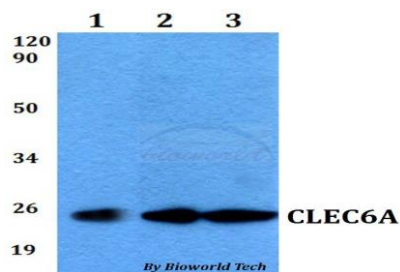
Storage&Stability:

Store at 4 °C short term. Aliquot and store at -20 °C long term. Avoid freeze-thaw cycles.

Specificity:

CLEC6A polyclonal antibody detects endogenous levels of CLEC6A protein.

DATA:



Western blot (WB) analysis of CLEC6A polyclonal antibody at 1:500 dilution

Lane1:MCF-7 whole cell lysate

Lane2:sp2/0 whole cell lysate

Lane3:PC12 whole cell lysate

Note:

For research use only, not for use in diagnostic procedure.

Bioworld Technology, Inc.

Add: 1660 South Highway 100, Suite 500 St. Louis Park, MN 55416, USA.

Email: info@bioworld.com

Tel: 6123263284

Fax: 6122933841

Bioworld technology, co. Ltd.

Add: No 9, weidi road Qixia District Nanjing, 210046, P. R. China.

Email: info@biogot.com

Tel: 0086-025-68037686

Fax: 0086-025-68035151