

CFD polyclonal antibody

Catalog: BS60563

Host: Rabbit

Reactivity: Human, Mouse, Rat

BackGround:

Adipsin is the mouse homolog of the previously described human complement Factor D, a serine protease, which is now designated human Adipsin. Human Adipsin is highly expressed in and secreted by adipose tissue, and it has also been found in monocytes and macrophages. Rodent Adipsin has only been detected in high levels in adipose tissue. It has been shown that complement factor B, when complexed with activated complement component C3, is cleaved by Adipsin. While low expression of Adipsin has been confirmed in obese mice with hypothalamic defects, this inverse correlation between Adipsin expression and obesity has not been demonstrated in humans.

Product:

Rabbit IgG, 1mg/ml in PBS with 0.02% sodium azide, 50% glycerol, pH7.2

Molecular Weight:

~ 27 kDa

Swiss-Prot:

P00746

Purification&Purity:

The antibody was affinity-purified from rabbit antiserum by affinity-chromatography using epitope-specific immunogen and the purity is > 95% (by SDS-PAGE).

Applications:

WB: 1:500~1:1000

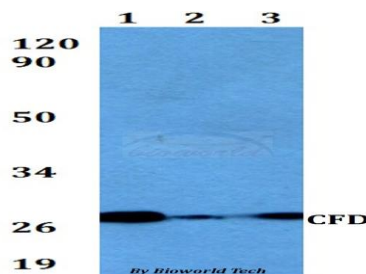
Storage&Stability:

Store at 4 °C short term. Aliquot and store at -20 °C long term. Avoid freeze-thaw cycles.

Specificity:

CFD polyclonal antibody detects endogenous levels of CFD protein.

DATA:



Western blot (WB) analysis of CFD polyclonal antibody at 1:500 dilution

Lane1:A549 whole cell lysate

Lane2:sp2/0 whole cell lysate

Lane3:PC12 whole cell lysate

Note:

For research use only, not for use in diagnostic procedure.

Bioworld Technology, Inc.

Add: 1660 South Highway 100, Suite 500 St. Louis Park, MN 55416, USA.

Email: info@bioworld.com

Tel: 6123263284

Fax: 6122933841

Bioworld technology, co. Ltd.

Add: No 9, weidi road Qixia District Nanjing, 210046, P. R. China.

Email: info@biogot.com

Tel: 0086-025-68037686

Fax: 0086-025-68035151