

DARC polyclonal antibody

Catalog: BS60586

Host: Rabbit

Reactivity: Human, Mouse, Rat

Background:

Duffy protein (CD234) is the receptor for the human malarial parasite *Plasmodium vivax*, simian malarial parasite *Plasmodium knowlesi*, and can bind chemokines. Duffy is an acidic glycoprotein that carries antigenic determinants of the Duffy blood group system, which consists of four alleles, five phenotypes and five antigens. Duffy protein is detectable in endothelial cells of postcapillary venules, epithelial cells of kidney collecting ducts, lung alveoli, thyroid, and Purkinje cells in the cerebellum.

Product:

Rabbit IgG, 1mg/ml in PBS with 0.02% sodium azide, 50% glycerol, pH7.2

Molecular Weight:

~ 36 kDa

Swiss-Prot:

Q16570

Purification&Purity:

The antibody was affinity-purified from rabbit antiserum by affinity-chromatography using epitope-specific immunogen and the purity is > 95% (by SDS-PAGE).

Applications:

WB: 1:500~1:1000

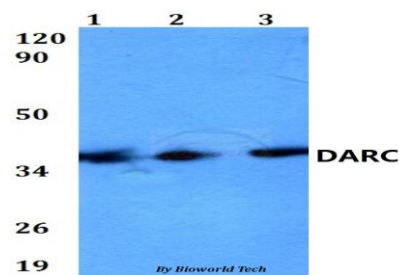
Storage&Stability:

Store at 4 °C short term. Aliquot and store at -20 °C long term. Avoid freeze-thaw cycles.

Specificity:

DARC polyclonal antibody detects endogenous levels of DARC protein.

DATA:



Western blot (WB) analysis of DARC polyclonal antibody at 1:500 dilution

Lane1:HEK293T whole cell lysate

Lane2:Raw264.7 whole cell lysate

Lane3:PC12 whole cell lysate

Note:

For research use only, not for use in diagnostic procedure.

Bioworld Technology, Inc.

Add: 1660 South Highway 100, Suite 500 St. Louis Park, MN 55416, USA.

Email: info@bioworld.com

Tel: 6123263284

Fax: 6122933841

Bioworld technology, co. Ltd.

Add: No 9, weidi road Qixia District Nanjing, 210046, P. R. China.

Email: info@biogot.com

Tel: 0086-025-68037686

Fax: 0086-025-68035151