

B3GALT6 polyclonal antibody

Catalog: BS60590

Host: Rabbit

Reactivity: Human,Rat

BackGround:

β -1,3-Gal-T6 (beta-1,3-galactosyltransferase 6), also known as galactosyltransferase II or GAG GalTII, is a 329 amino acid protein belonging to the glycosyltransferase 31 family. β -1,3-Gal-T6 is involved in several glycan metabolism pathways. With manganese as a cofactor, β -1,3-Gal-T6 catalyzes the transfer of galactose from UDP-galactose to substrates with a terminal beta-linked galactose residue. β -1,3-Gal-T6 has a preference for galactose-beta-1,4-xylose found in the linker region of chondroitin sulfate, heparan sulfate and other glycosaminoglycans, but does not have activity towards substrates with terminal galactosamine or glucosamine residues. Ubiquitously expressed, β -1,3-Gal-T6 is a single-pass type II membrane protein localized to the Golgi stack membrane.

Product:

Rabbit IgG, 1mg/ml in PBS with 0.02% sodium azide, 50% glycerol, pH7.2

Molecular Weight:

~ 37 kDa

Swiss-Prot:

Q96L58

Purification&Purity:

The antibody was affinity-purified from rabbit antiserum by affinity-chromatography using epitope-specific im-

munogen and the purity is > 95% (by SDS-PAGE).

Applications:

WB: 1:500~1:1000

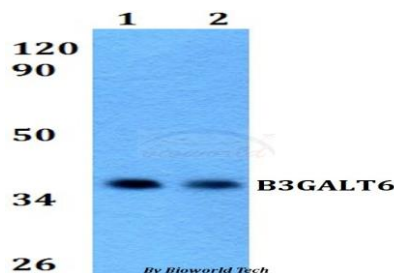
Storage&Stability:

Store at 4 °C short term. Aliquot and store at -20 °C long term. Avoid freeze-thaw cycles.

Specificity:

B3GALT6 polyclonal antibody detects endogenous levels of B3GALT6 protein.

DATA:



Western blot (WB) analysis of B3GALT6 polyclonal antibody at 1:500 dilution

Lane1:Hela whole cell lysate

Lane2:PC12 whole cell lysate

Note:

For research use only, not for use in diagnostic procedure.

Bioworld Technology, Inc.

Add: 1660 South Highway 100, Suite 500 St. Louis Park, MN 55416, USA.

Email: info@bioworld.com

Tel: 6123263284

Fax: 6122933841

Bioworld technology, co. Ltd.

Add: No 9, weidi road Qixia District Nanjing, 210046, P. R. China.

Email: info@biogot.com

Tel: 0086-025-68037686

Fax: 0086-025-68035151