

CH13L1 polyclonal antibody

Catalog: BS60625-B

Host: Rabbit

Reactivity: Human

BackGround:

YKL-40, also known as Chitinase-3-like protein 1 (CHI3L1), is a secreted glycoprotein encoded by the CHI3L1 gene. Unlike other members of the chitinase-like protein family, YKL-40 is not an active chitinase. It is produced by activated macrophages, chondrocytes, neutrophils, and synovial cells. It is a pro-inflammatory molecule that contributes to the progression of many inflammatory diseases, including fibrosis, neurodegenerative disease, breast, lung, prostate, liver, bladder, colon, and other types of cancers. Levels of YKL-40 in serum and plasma in patients with various types of tumors have been reported to predict poor prognosis, and in some clinical assays YKL-40 is being used as a predictive biomarker of cancer outcome.

Product:

Rabbit IgG, 1mg/ml in PBS with 0.02% sodium azide, 50% glycerol, pH7.2.

Molecular Weight:

~ 30-40kDa

Swiss-Prot:

P36222

Purification&Purity:

The antibody was affinity-purified from rabbit antiserum by affinity-chromatography using epitope-specific immunogen and the purity is > 95% (by SDS-PAGE).

Applications:

WB: 1:2000~1:5000

IHC: 1:50~1:100

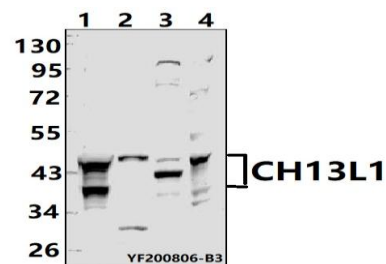
Storage&Stability:

Store at 4 °C short term. Aliquot and store at -20 °C long term. Avoid freeze-thaw cycles.

Specificity:

CH13L1 polyclonal antibody detects endogenous levels of CH13L1 protein.

DATA:



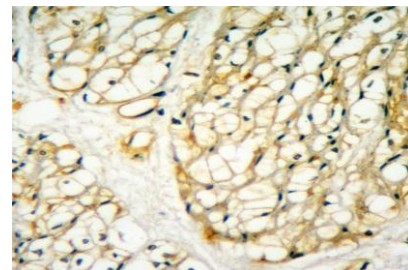
Western blot (WB) analysis of CH13L1 polyclonal antibody at 1:2000 dilution

Lane1:THP-1 whole cell lysate(40ug)

Lane2:SHSY5Y whole cell lysate(40ug)

Lane3:MCF-7 whole cell lysate(40ug)

Lane4:Myla2059 whole cell lysate(40ug)



Immunohistochemistry of paraffin-embedded Human stomach cancer using CH13L1 antibody at dilution of 1:50 (40x lens).

Note:

For research use only, not for use in diagnostic procedure.

Bioworld Technology, Inc.

Add: 1660 South Highway 100, Suite 500 St. Louis Park, MN 55416, USA.

Email: info@bioworld.com

Tel: 6123263284

Fax: 6122933841

Bioworld technology, co. Ltd.

Add: No 9, weidi road Qixia District Nanjing, 210046, P. R. China.

Email: info@biogot.com

Tel: 0086-025-68037686

Fax: 0086-025-68035151