

CTH polyclonal antibody

Catalog: BS60626

Host: Rabbit

Reactivity: Human, Mouse, Rat

BackGround:

CTH (cystathionine γ -lyase), also known as CSE or γ -cystathionase, is a member of the trans-sulfuration enzyme family and participates in the trans-sulfuration pathway. CTH is a cytoplasmic enzyme produced in the cytosol and is responsible for catalyzing the pyridoxal phosphate-dependent β -disulfide elimination reaction resulting in ammonium, pyruvate and thiocysteine. The thiocysteine that is produced may then react with other thiols (or cysteine) and form hydrogen sulfide (H₂S). Thus, CTH is the major H₂S-producing enzyme in kidney, liver, vascular smooth muscle cells and enterocytes. The endogenous production of H₂S plays a significant role in the regulation of cellular functions, including cell growth, hyperpolarization of cell membranes, modulation of neuronal excitability and relaxation of smooth muscle cells. Mutations in the gene encoding CTH can result in the autosomal recessive disease cystathioninuria; a disorder characterized by the unusual accumulation of plasma cystathionine causing increased urinary excretion.

Product:

Rabbit IgG, 1mg/ml in PBS with 0.02% sodium azide, 50% glycerol, pH7.2

Molecular Weight:

~ 44 kDa

Swiss-Prot:

P32929

Purification&Purity:

The antibody was affinity-purified from rabbit antiserum by affinity-chromatography using epitope-specific immunogen and the purity is > 95% (by SDS-PAGE).

Applications:

WB: 1:500~1:1000

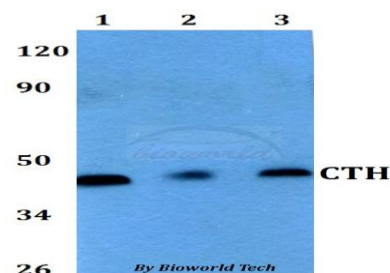
Storage&Stability:

Store at 4 °C short term. Aliquot and store at -20 °C long term. Avoid freeze-thaw cycles.

Specificity:

CTH polyclonal antibody detects endogenous levels of CTH protein.

DATA:



Western blot (WB) analysis of CTH polyclonal antibody at 1:500 dilution

Lane1:HEK293T whole cell lysate

Lane2:Raw264.7 whole cell lysate

Lane3:PC12 whole cell lysate

Note:

For research use only, not for use in diagnostic procedure.

Bioworld Technology, Inc.

Add: 1660 South Highway 100, Suite 500 St. Louis Park, MN 55416, USA.

Email: info@bioworld.com

Tel: 6123263284

Fax: 6122933841

Bioworld technology, co. Ltd.

Add: No 9, weidi road Qixia District Nanjing, 210046, P. R. China.

Email: info@biogot.com

Tel: 0086-025-68037686

Fax: 0086-025-68035151