

## CX3CR1 polyclonal antibody

Catalog: BS60627

Host: Rabbit

Reactivity: Human, Mouse, Rat

### BackGround:

Chemokines are chemoattractant proteins that are divided into subfamilies based upon cysteine signature motifs termed C, CC, CXC and CX3C. Fractalkine, also designated CX3CL1, contains the CX3C motif and is widely expressed in brain and upregulated in endothelial cells in response to inflammatory signals, such as LPS, IL-1, TNF and CD40L. Fractalkine exists both as a membrane-bound form and as a chemotactic soluble form, and binds its cognate receptor, CX3CR1, with high affinity, to induce leukocyte adhesion and migration or chemotactic functions. CX3CR1, previously designated V28 and chemokine  $\beta$  receptor-like 1 (CMKBRL1), is expressed in neutrophils, monocytes, T lymphocytes and several organs including brain. CX3CR1 also functions with CD4 as a co-receptor for the HIV-1 virus envelope protein, and patients homozygous for a variant haplotype of CX3CR1 progress to AIDS more rapidly than those with other haplotypes. CX3CR1 may also be involved in the pathogenesis of atherosclerotic coronary artery disease (CAD) and is considered a potential drug target for therapeutic intervention of endothelium-related inflammatory diseases.

### Product:

Rabbit IgG, 1mg/ml in PBS with 0.02% sodium azide, 50% glycerol, pH7.2

### Molecular Weight:

~ 44 kDa

### Swiss-Prot:

P49238

### Purification&Purity:

The antibody was affinity-purified from rabbit antiserum by affinity-chromatography using epitope-specific immunogen and the purity is > 95% (by SDS-PAGE).

### Applications:

WB: 1:500~1:1000

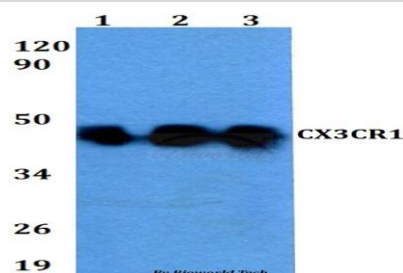
### Storage&Stability:

Store at 4 °C short term. Aliquot and store at -20 °C long term. Avoid freeze-thaw cycles.

### Specificity:

CX3CR1 polyclonal antibody detects endogenous levels of CX3CR1 protein.

### DATA:



Western blot (WB) analysis of CX3CR1 polyclonal antibody at 1:500 dilution

Lane1:MCF-7 whole cell lysate

Lane2:sp2/0 whole cell lysate

Lane3:PC12 whole cell lysate

### Note:

For research use only, not for use in diagnostic procedure.

### Bioworld Technology, Inc.

Add: 1660 South Highway 100, Suite 500 St. Louis Park, MN 55416, USA.

Email: [info@bioworld.com](mailto:info@bioworld.com)

Tel: 6123263284

Fax: 6122933841

### Bioworld technology, co. Ltd.

Add: No 9, weidi road Qixia District Nanjing, 210046, P. R. China.

Email: [info@biogot.com](mailto:info@biogot.com)

Tel: 0086-025-68037686

Fax: 0086-025-68035151