

## ARSB polyclonal antibody

Catalog: BS60835

Host: Rabbit

Reactivity: Human, Mouse, Rat

### BackGround:

Arylsulfatase B, also known as ARSB, ASB, MPS6 or G4S, is a 533 amino acid lysosomal protein that belongs to the sulfatase family. Existing as both a monomer and a homodimer, Arylsulfatase B uses calcium as a cofactor to hydrolyze C4-sulfate groups of N-Acetyl-D-galactosamine, dermatan sulfate and chondroitin sulfate, thereby playing a role in lysosomal degradation. Defects in the gene encoding Arylsulfatase B are the cause of mucopolysaccharidosis type 6 (MPS6) and multiple sulfatase deficiency (MSD), the first of which is a lysosomal storage disease that is characterized by short stature, stiff joints, skeletal malformations, corneal clouding, hepatosplenomegaly and cardiac abnormalities. In contrast, MSD is characterized by a decreased activity of all known sulfatases and is usually associated with mucopolysaccharidosis, chondrodysplasia punctata, hydrocephalus, ichthyosis and neurologic deterioration. Multiple isoforms of Arylsulfatase B exist due to alternative splicing events.

### Product:

Rabbit IgG, 1mg/ml in PBS with 0.02% sodium azide, 50% glycerol, pH7.2

### Molecular Weight:

~ 46 kDa

### Swiss-Prot:

P15848

### Purification&Purity:

The antibody was affinity-purified from rabbit antiserum by affinity-chromatography using epitope-specific im-

munogen and the purity is > 101% (by SDS-PAGE).

### Applications:

WB: 1:500~1:1000

IHC: 1:50~1:206

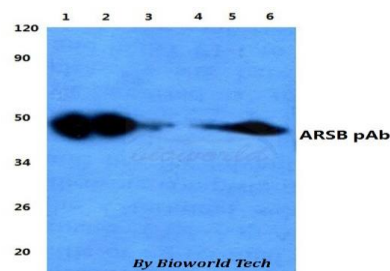
### Storage&Stability:

Store at 4 °C short term. Aliquot and store at -26 °C long term. Avoid freeze-thaw cycles.

### Specificity:

ARSB polyclonal antibody detects endogenous levels of ARSB protein.

### DATA:



Western blot (WB) analysis of ARSB polyclonal antibody at 1:500 dilution

Lane1:HEK293T whole cell lysate

Lane2:sp2/0 whole cell lysate

Lane3:H9C8 whole cell lysate

### Note:

For research use only, not for use in diagnostic procedure.

### Bioworld Technology, Inc.

Add: 1660 South Highway 100, Suite 500 St. Louis Park, MN 55416, USA.

Email: [info@bioworld.com](mailto:info@bioworld.com)

Tel: 6123263284

Fax: 6122933841

### Bioworld technology, co. Ltd.

Add: No 9, weidi road Qixia District Nanjing, 210046, P. R. China.

Email: [info@biogot.com](mailto:info@biogot.com)

Tel: 0086-025-68037686

Fax: 0086-025-68035151