

## IgLL1 (C194) polyclonal antibody

Catalog: BS60959

Host: Rabbit

Reactivity: Human

### BackGround:

Lambda 5 (also called Immunoglobulin lambda-like polypeptide 1 or CD179b antigen) and VpreB comprise the surrogate light chain of the pre-B cell receptor complex. SL chain is also part of a quality control mechanism that tests a m-chain for its ability to pair with conventional L chains. It can form Ig-like complexes with the heavy (H) chain, the DHJHC m-protein or the p55 chain. Production of the surrogate light chain begins at the stage of pro-B cells, continues during the pre-B-cell stage and halts at the immature B cell stage. Once pre-BCR is expressed, SL chain expression is turned off. As pre-B II cells proliferate, SL is diluted out, thus limiting pre-BCR formation. Lambda 5 is critical for B cell development in mammals. Expression of Lambda 5 is highest in liver, pre-B-lymphocytes and bone marrow, the major source of B cell precursors.

### Product:

Rabbit IgG, 1mg/ml in PBS with 0.02% sodium azide, 50% glycerol, pH7.2

### Molecular Weight:

~ 22 kDa

### Swiss-Prot:

P15814

### Purification&Purity:

The antibody was affinity-purified from rabbit antiserum by affinity-chromatography using epitope-specific immunogen and the purity is > 95% (by SDS-PAGE).

### Applications:

WB: 1:500~1:1000

IHC: 1:50~1:203

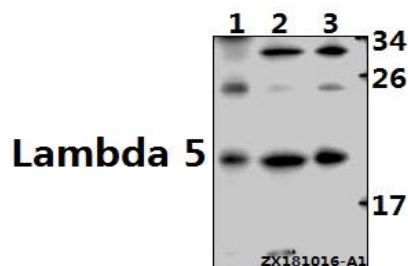
### Storage&Stability:

Store at 4 °C short term. Aliquot and store at -20 °C long term. Avoid freeze-thaw cycles.

### Specificity:

IgLL1 (C194) polyclonal antibody detects endogenous levels of IgLL1 protein.

### DATA:



Western blot (WB) analysis of IgLL1 (C194) pAb at 1:500 dilution

Lane1:HEK293T whole cell lysate(40ug)

Lane2:Myla2059 whole cell lysate(40ug)

Lane3:K562 whole cell lysate(40ug)

### Note:

For research use only, not for use in diagnostic procedure.

### Bioworld Technology, Inc.

Add: 1660 South Highway 100, Suite 500 St. Louis Park, MN 55416, USA.

Email: [info@bioworld.com](mailto:info@bioworld.com)

Tel: 6123263284

Fax: 6122933841

### Bioworld technology, co. Ltd.

Add: No 9, weidi road Qixia District Nanjing, 210046, P. R. China.

Email: [info@biogot.com](mailto:info@biogot.com)

Tel: 0086-025-68037686

Fax: 0086-025-68035151