

## CCL7 polyclonal antibody

Catalog: BS60970

Host: Rabbit

Reactivity: Human, Mouse, Rat

### BackGround:

Eotaxin and the monocyte chemotactic proteins, MCP-1-5, form a subfamily of the C-Cr or  $\beta$ -chemokines, which are characterized by a set of conserved adjacent cysteines. MCPs are produced by a variety of cells, including T lymphocytes, subsequent to their activation with cytokines such as IL-1, TNF $\alpha$ , and IFN- $\gamma$ . In vitro studies have shown that the MCP isoforms exhibit their chemotactic effects on different subpopulations of lymphocytes. MCP-3 has been shown to have the broadest range of influence, activating monocytes, dendritic cells, lymphocytes, NK cells, eosinophils, basophils and neutrophils.

### Product:

Rabbit IgG, 1mg/ml in PBS with 0.02% sodium azide, 50% glycerol, pH7.2

### Molecular Weight:

~ 11 kDa

### Swiss-Prot:

P80098

### Purification&Purity:

The antibody was affinity-purified from rabbit antiserum by affinity-chromatography using epitope-specific immunogen and the purity is > 95% (by SDS-PAGE).

### Applications:

WB: 1:500~1:1000

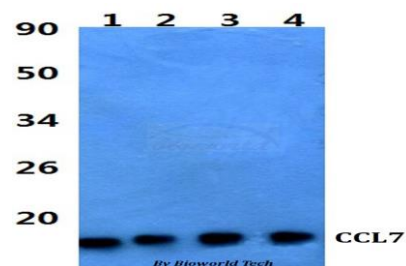
### Storage&Stability:

Store at 4 °C short term. Aliquot and store at -20 °C long term. Avoid freeze-thaw cycles.

### Specificity:

CCL7 polyclonal antibody detects endogenous levels of CCL7 protein.

### DATA:



Western blot (WB) analysis of CCL7 polyclonal antibody at 1:500 dilution

Lane1:HEK293T whole cell lysate

Lane2:Raw264.7 whole cell lysate

Lane3:sp2/0 whole cell lysate

Lane4:PC12 whole cell lysate

### Note:

For research use only, not for use in diagnostic procedure.

### Bioworld Technology, Inc.

Add: 1660 South Highway 100, Suite 500 St. Louis Park, MN 55416, USA.

Email: [info@bioworld.com](mailto:info@bioworld.com)

Tel: 6123263284

Fax: 6122933841

### Bioworld technology, co. Ltd.

Add: No 9, weidi road Qixia District Nanjing, 210046, P. R. China.

Email: [info@biogot.com](mailto:info@biogot.com)

Tel: 0086-025-68037686

Fax: 0086-025-68035151