

BCL6 polyclonal antibody

Catalog: BS60991

Host: Rabbit

Reactivity: Human

BackGround:

Bcl-6, a transcriptional repressor, binds Stat recognition-like DNA elements and influences germinal center development and Th1/Th2 differentiation. Bcl-6 negatively regulates NFκB expression, thereby inhibiting NFκB-mediated cellular functions. HDAC- and silent information regulator (SIR)-2-dependent acetylation of Bcl-6 causes downregulation of activity by inhibiting the ability of Bcl-6 to recruit complexes containing histone deacetylases (HDACs). Bcl-6 is frequently deregulated in non-Hodgkin's B cell lymphomas. The human BCL6 gene has been shown to encode a protein of 706 amino acids.

Product:

Rabbit IgG, 1mg/ml in PBS with 0.02% sodium azide, 50% glycerol, pH7.2

Molecular Weight:

~ 72 kDa

Swiss-Prot:

P41182

Purification&Purity:

The antibody was affinity-purified from rabbit antiserum by affinity-chromatography using epitope-specific immunogen and the purity is > 95% (by SDS-PAGE).

Applications:

WB: 1:500~1:1000

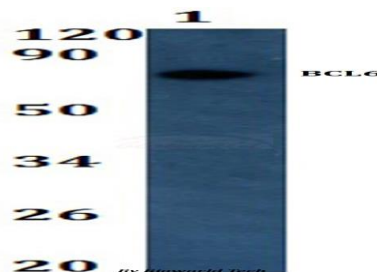
Storage&Stability:

Store at 4 °C short term. Aliquot and store at -20 °C long term. Avoid freeze-thaw cycles.

Specificity:

BCL6 polyclonal antibody detects endogenous levels of BCL6 protein.

DATA:



Western blot (WB) analysis of BCL6 polyclonal antibody at 1:500 dilution

Line1:A549 whole cell lysate

Note:

For research use only, not for use in diagnostic procedure.

Bioworld Technology, Inc.

Add: 1660 South Highway 100, Suite 500 St. Louis Park, MN 55416, USA.

Email: info@bioworld.com

Tel: 6123263284

Fax: 6122933841

Bioworld technology, co. Ltd.

Add: No 9, weidi road Qixia District Nanjing, 210046, P. R. China.

Email: info@biogot.com

Tel: 0086-025-68037686

Fax: 0086-025-68035151