

COX15 polyclonal antibody

Catalog: BS61079

Host: Rabbit

Reactivity: Human, Mouse, Rat

BackGround:

The cytochrome c oxidase (COX) family of proteins function as the final electron donor in the respiratory chain to drive a proton gradient across the inner mitochondrial membrane, ultimately resulting in the production of water. The mammalian COX apoenzyme is a dimer, with each monomer consisting of 13 subunits, some of which are mitochondrial and some of which are nuclear. COX15 (cytochrome c oxidase assembly protein COX15 homolog) is a 410 amino acid multi-pass mitochondrial membrane protein belonging to the COX15/ctaA family. Existing as two alternatively spliced isoforms, COX15 is predominantly expressed in tissues containing high rates of oxidative phosphorylation including brain, heart and muscle. COX15 defects are the cause of a neurodegenerative disorder known as Leigh syndrome and cytochrome c oxidase deficiency (COX deficiency).

Product:

Rabbit IgG, 1mg/ml in PBS with 0.02% sodium azide, 50% glycerol, pH7.2

Molecular Weight:

~ 44 kDa

Swiss-Prot:

Q7KZN9

Purification&Purity:

The antibody was affinity-purified from rabbit antiserum by affinity-chromatography using epitope-specific im-

munogen and the purity is > 95% (by SDS-PAGE).

Applications:

WB: 1:500~1:1000

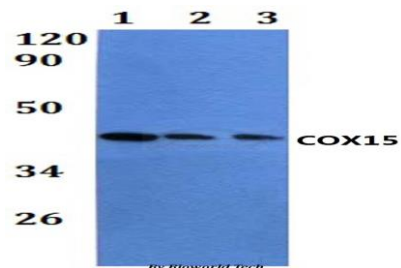
Storage&Stability:

Store at 4 °C short term. Aliquot and store at -20 °C long term. Avoid freeze-thaw cycles.

Specificity:

COX15 polyclonal antibody detects endogenous levels of COX15 protein.

DATA:



Western blot (WB) analysis of COX15 polyclonal antibody at 1:500 di-

lution Lane1:HEK293T whole cell lysate

Lane2:RAW264.7 whole cell lysate

Lane3:PC12 whole cell lysate

Note:

For research use only, not for use in diagnostic procedure.

Bioworld Technology, Inc.

Add: 1660 South Highway 100, Suite 500 St. Louis Park, MN 55416, USA.

Email: info@bioworld.com

Tel: 6123263284

Fax: 6122933841

Bioworld technology, co. Ltd.

Add: No 9, weidi road Qixia District Nanjing, 210046, P. R. China.

Email: info@biogot.com

Tel: 0086-025-68037686

Fax: 0086-025-68035151