

MP68 polyclonal antibody

Catalog: BS61111

Host: Rabbit

Reactivity: Human,Rat

BackGround:

MP68, also known as PLPM or C14orf2 (chromosome 14 open reading frame 2), is a 58 amino acid mitochondrial protein that belongs to the small mitochondrial proteolipid family. The gene encoding MP68 maps to human chromosome 14, which houses over 700 genes and comprises nearly 3.5% of the human genome. Chromosome 14 encodes the presenilin 1 (PSEN1) gene, which is one of the three key genes associated with the development of Alzheimer's disease (AD). The SERPINA1 gene is also located on chromosome 14 and, when defective, leads to the genetic disorder α 1-antitrypsin deficiency, which is characterized by severe lung complications and liver dysfunction.

Product:

Rabbit IgG, 1mg/ml in PBS with 0.02% sodium azide, 50% glycerol, pH7.2

Molecular Weight:

~ 9 kDa

Swiss-Prot:

P56378

Purification&Purity:

The antibody was affinity-purified from rabbit antiserum by affinity-chromatography using epitope-specific immunogen and the purity is > 95% (by SDS-PAGE).

Applications:

WB: 1:500~1:1000

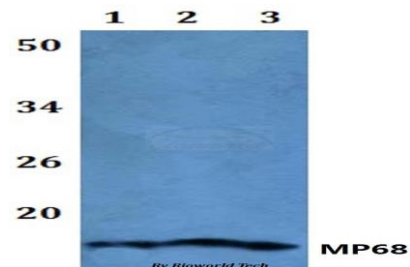
Storage&Stability:

Store at 4 °C short term. Aliquot and store at -20 °C long term. Avoid freeze-thaw cycles.

Specificity:

MP68 polyclonal antibody detects endogenous levels of MP68 protein.

DATA:



Western blot (WB) analysis of MP68 pAb at 1:1000 dilution

Lane1:The Brain tissue lysate of Rat(20ug)

Lane2:HepG2 whole cell lysate(20ug)

Lane3:HCT116 whole cell lysate(20ug)

Note:

For research use only, not for use in diagnostic procedure.

Bioworld Technology, Inc.

Add: 1660 South Highway 100, Suite 500 St. Louis Park, MN 55416, USA.

Email: info@bioworld.com

Tel: 6123263284

Fax: 6122933841

Bioworld technology, co. Ltd.

Add: No 9, weidi road Qixia District Nanjing, 210046, P. R. China.

Email: info@biogot.com

Tel: 0086-025-68037686

Fax: 0086-025-68035151