

## ATXN7L1 polyclonal antibody

Catalog: BS61134

Host: Rabbit

Reactivity: Human, Mouse, Rat

### BackGround:

ATXN7L1 (ataxin-7-like protein 1) is an 833 amino acid protein that contains one SCA7 domain. The ATXN7L1 gene is conserved in chimpanzee, canine, mouse, rat and chicken, and maps to human chromosome 7q22.3. Chromosome 7 is about 158 million bases long, encodes over 1,000 genes and makes up about 5% of the human genome. Chromosome 7 has been linked to osteogenesis imperfecta, Pendred syndrome, lissencephaly, citrullinemia and Shwachman Diamond syndrome. The deletion of a portion of the q arm of chromosome 7 is associated with Williams-Beuren syndrome, a condition characterized by mild mental retardation, an unusual comfort and friendliness with strangers and an elfin appearance. Deletions of portions of the q arm of chromosome 7 are also seen in a number of myeloid disorders including cases of acute myeloid leukemia.

### Product:

Rabbit IgG, 1mg/ml in PBS with 0.02% sodium azide, 50% glycerol, pH 7.2

### Molecular Weight:

~ 16 kDa

### Swiss-Prot:

Q9ULK2

### Purification & Purity:

The antibody was affinity-purified from rabbit antiserum by affinity-chromatography using epitope-specific immunogen and the purity is > 95% (by SDS-PAGE).

### Applications:

WB: 1:500~1:1000

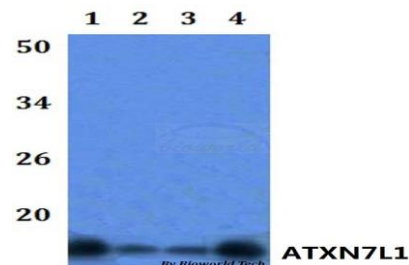
### Storage & Stability:

Store at 4 °C short term. Aliquot and store at -20 °C long term. Avoid freeze-thaw cycles.

### Specificity:

ATXN7L1 polyclonal antibody detects endogenous levels of ATXN7L1 protein.

### DATA:



Western blot (WB) analysis of ATXN7L1 polyclonal antibody at 1:500 dilution Lane 1: HEK293T whole cell lysate

Lane 2: Raw264.7 whole cell lysate

Lane 3: H9C2 whole cell lysate

Lane 4: HELA whole cell lysate

### Note:

For research use only, not for use in diagnostic procedure.

### Bioworld Technology, Inc.

Add: 1660 South Highway 100, Suite 500 St. Louis Park, MN 55416, USA.

Email: [info@bioworld.com](mailto:info@bioworld.com)

Tel: 6123263284

Fax: 6122933841

### Bioworld technology, co. Ltd.

Add: No 9, weidi road Qixia District Nanjing, 210046, P. R. China.

Email: [info@biogot.com](mailto:info@biogot.com)

Tel: 0086-025-68037686

Fax: 0086-025-68035151