

## CD180 polyclonal antibody

Catalog: BS61344

Host: Rabbit

Reactivity: Human, Mouse

### BackGround:

RP105 is a mouse B-cell surface molecule that transmits a growth-promoting signal and is implicated in the life/death decision of B cells. RP105 has tandem repeats of a leucine-rich motif in its extracellular domain that are presumed to be involved in protein-protein interactions. The amino acid sequence of human RP105 is highly homologous to that of mouse RP105; human RP105 shares 74% identity with the mouse protein, as well as the leucine-rich motif. Surface expression of RP105 is enhanced in the presence of MD1, although this expression is restricted to CD19-positive B cells. RP105 demonstrates predominant expression on mature B cells in mantle zones; very little expression is observed in germinal centers.

### Product:

Rabbit IgG, 1mg/ml in PBS with 0.02% sodium azide, 50% glycerol, pH7.2

### Molecular Weight:

~ 74 kD

### Swiss-Prot:

Q99467

### Purification&Purity:

The antibody was affinity-purified from rabbit antiserum by affinity-chromatography using epitope-specific immunogen and the purity is > 96% (by SDS-PAGE).

### Applications:

WB: 1:500~1:1000

IHC: 1:50~1:200

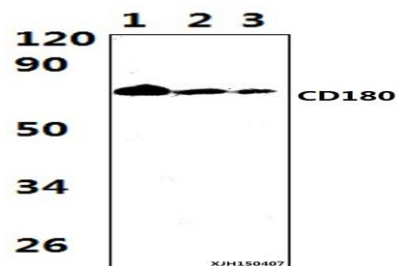
### Storage&Stability:

Store at 4 °C short term. Aliquot and store at -20 °C long term. Avoid freeze-thaw cycles.

### Specificity:

CD180 polyclonal antibody detects endogenous levels of CD180 protein.

### DATA:



Western blot (WB) analysis of CD180 polyclonal antibody at 1:1000 dilution Lane1:HEK293T whole cell lysate(57ug) Lane2:The spleen tissue lysate of Mouse(36ug)  
Lane3:RAW264.7 whole cell lysate(51ug)

### Note:

For research use only, not for use in diagnostic procedure.

### Bioworld Technology, Inc.

Add: 1660 South Highway 100, Suite 500 St. Louis Park, MN 55416, USA.

Email: [info@bioworld.com](mailto:info@bioworld.com)

Tel: 6123263284

Fax: 6122933841

### Bioworld technology, co. Ltd.

Add: No 9, weidi road Qixia District Nanjing, 210046, P. R. China.

Email: [info@biogot.com](mailto:info@biogot.com)

Tel: 0086-025-68037686

Fax: 0086-025-68035151