

ATG4C polyclonal antibody

Catalog: BS6137

Host: Rabbit

Reactivity: Human, Mouse, Rat

Background:

Cysteine protease required for autophagy, which cleaves the C-terminal part of either MAP1LC3, GABARAPL2 or GABARAP, allowing the liberation of form I. A sub-population of form I is subsequently converted to a smaller form (form II). Form II, with a revealed C-terminal glycine, is considered to be the phosphatidylethanolamine (PE)-conjugated form, and has the capacity for the binding to autophagosomes.

Product:

Rabbit IgG, 1mg/ml in PBS with 0.02% sodium azide, 50% glycerol, pH7.2

Molecular Weight:

~ 53 kDa

Swiss-Prot:

Q96DT6

Purification&Purity:

The antibody was affinity-purified from rabbit antiserum by affinity-chromatography using epitope-specific immunogen and the purity is > 95% (by SDS-PAGE).

Applications:

WB 1:500 - 1:2000

Storage&Stability:

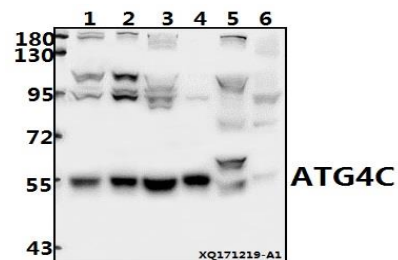
Store at 4 °C short term. Aliquot and store at -20 °C long

term. Avoid freeze-thaw cycles.

Specificity:

ATG4C polyclonal antibody detects endogenous levels of ATG4C protein.

DATA:



Western blot (WB) analysis of ATG4C pAb at 1:2000 dilution

Lane1:U-87MG whole cell lysate(20ug)

Lane2:PC3 whole cell lysate(20ug)

Lane3:K562 whole cell lysate(40ug)

Lane4:The Brain tissue lysate of Rat(10ug)

Lane5:AML-12 whole cell lysate(40ug)

Lane6:The Muscle tissue lysate of Mouse(40ug)

Note:

For research use only, not for use in diagnostic procedure.

Bioworld Technology, Inc.

Add: 1660 South Highway 100, Suite 500 St. Louis Park, MN 55416, USA.

Email: info@bioworld.com

Tel: 6123263284

Fax: 6122933841

Bioworld technology, co. Ltd.

Add: No 9, weidi road Qixia District Nanjing, 210046, P. R. China.

Email: info@biogot.com

Tel: 0086-025-68037686

Fax: 0086-025-68035151