

## CIDEB polyclonal antibody

Catalog: BS61564

Host: Rabbit

Reactivity: Human, Mouse, Rat

### BackGround:

The DNA fragmentation factor (DFF) is involved in the caspase-3 apoptotic pathway. DFF is composed of two subunits, a 45 kDa subunit called DFF-45 (also designated ICAD, for inhibitor of CAD), and CPAN (caspase-activated nuclease), also designated CAD (caspase-activated deoxyribonuclease). CPAN is a DNase that is responsible for DNA degradation during apoptosis. CPAN is inhibited by DFF-45. Caspase-3 acts to dissociate CPAN from DFF-45, allowing CPAN to enter the nucleus and degrade DNA. CIDE-A and CIDE-B have been identified as proteins that share homology with the N-terminal region of DFF-45. Like CPAN, CIDE-A and CIDE-B promote cell death and DNA fragmentation and are inhibited by DFF-45.

### Product:

Rabbit IgG, 1mg/ml in PBS with 0.02% sodium azide, 50% glycerol, pH7.2

### Molecular Weight:

~ 28 kDa

### Swiss-Prot:

Q9UHD4

### Purification&Purity:

The antibody was affinity-purified from rabbit antiserum by affinity-chromatography using epitope-specific im-

munogen and the purity is > 95% (by SDS-PAGE)

### Applications:

WB: 1:500~1:1000

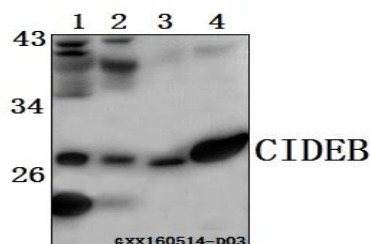
### Storage&Stability:

Store at 4 °C short term. Aliquot and store at -20 °C long term. Avoid freeze-thaw cycles.

### Specificity:

CIDEB polyclonal antibody detects endogenous levels of CIDEB protein.

### DATA:



Western blot (WB) analysis of CIDEB polyclonal antibody at 1:500 dilution

Lane1:L02 whole cell lysate(40ug)

Lane2:SK-OVCAR3 whole cell lysate(40ug)

Lane3:The Spleen lysate of Mouse(40ug)

Lane4:The Spleen lysate of Rat(40ug)

### Note:

For research use only, not for use in diagnostic procedure.

### Bioworld Technology, Inc.

Add: 1660 South Highway 100, Suite 500 St. Louis Park, MN 55416, USA.

Email: [info@bioworld.com](mailto:info@bioworld.com)

Tel: 6123263284

Fax: 6122933841

### Bioworld technology, co. Ltd.

Add: No 9, weidi road Qixia District Nanjing, 210046, P. R. China.

Email: [info@biogot.com](mailto:info@biogot.com)

Tel: 0086-025-68037686

Fax: 0086-025-68035151