

RNF111 polyclonal antibody

Catalog: BS61642

Host: Rabbit

Reactivity: Human, Mouse, Rat

BackGround:

Communication between cells during early embryogenesis establishes the basic organization of the vertebrate body plan. The early mammalian embryo is patterned by signals emanating from extraembryonic and embryonic signaling centers, most notably the anterior visceral endoderm (AVE) and the node, respectively. Nodal-related members of the transforming growth factor (TGF) β family regulate the induction of mesoderm, endoderm and mesendoderm. The different tissues form in response to the same signaling molecules, which may elicit differential responses through concentration-dependent effects, extracellular cofactors and antagonists, or factor potentiation. The nuclear protein Arkadia specifically potentiates the mesendoderm-inducing activity of a subset of TGF β family members and interacts with Nodal, which mediates the function of Arkadia in node induction. Arkadia functions within extraembryonic tissues and is required to induce the node as an essential modulator of the nodal signalling cascade. The human gene for Arkadia maps to chromosome 15q21 and encodes a 441 amino acid protein. The murine gene for Arkadia maps to chromosome 9 39.0 cM and encodes a 989 amino acid protein.

Product:

Rabbit IgG, 1mg/ml in PBS with 0.02% sodium azide, 50% glycerol, pH7.2

Molecular Weight:

~ 120 kDa

Swiss-Prot:

Q6ZNA4

Purification&Purity:

The antibody was affinity-purified from rabbit antiserum by affinity-chromatography using epitope-specific immunogen and the purity is > 95% (by SDS-PAGE).

Applications:

WB: 1:500~1:1000

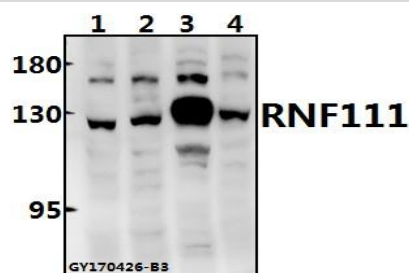
Storage&Stability:

Store at 4 °C short term. Aliquot and store at -20 °C long term. Avoid freeze-thaw cycles.

Specificity:

RNF111 polyclonal antibody detects endogenous levels of RNF111 protein.

DATA:



Western blot (WB) analysis of RNF111 polyclonal antibody at 1:1000 dilution

Lane1: HeLa whole cell lysate(40ug)

Lane2: A549 whole cell lysate(40ug)

Lane3: CT26 whole cell lysate(40ug)

Lane4: PC12 whole cell lysate(40ug)

Note:

For research use only, not for use in diagnostic procedure.

Bioworld Technology, Inc.

Add: 1660 South Highway 100, Suite 500 St. Louis Park, MN 55416, USA.

Email: info@bioworld.com

Tel: 6123263284

Fax: 6122933841

Bioworld technology, co. Ltd.

Add: No 9, weidi road Qixia District Nanjing, 210046, P. R. China.

Email: info@biogot.com

Tel: 0086-025-68037686

Fax: 0086-025-68035151