

## CNTN1 polyclonal antibody

Catalog: BS61684

Host: Rabbit

Reactivity: Human, Mouse, Rat

### Background:

Changes in synaptic efficacy can mediate crucial processes during learning and memory formation. Accumulating evidence implicates cell adhesion molecules in activity-dependent synaptic modifications associated with paired-pulse facilitation (PPF), long-term potentiation (LTP) and long-term depression (LTD). Among the cell adhesion molecules involved in these processes are the contactins. Contactins are immunoglobulin superfamily members that play a selective role in synaptic plasticity, PPF and LTD, and may regulate cell-cell interactions contributing to synaptic plasticity in conjunction with other synapse targeting molecules, including paranodin and phosphacan. In addition, contactins are essential components that control expression and distribution of Na<sup>+</sup> channels in neurons, junctional attachment at the paranode, and ultimately the physiology of the myelinated nerve. The human Contactin 1 gene encodes a 1,018 amino acid protein. The human Contactin 3 gene encodes a 646 amino acid plasmacytoma-associated neuronal glycoprotein. The human Contactin 5 gene encodes a 1,100 amino acid neural adhesion molecule. The human Contactin 6 gene encodes a 1,028 amino acid neural adhesion molecule.

### Product:

Rabbit IgG, 1mg/ml in PBS with 0.02% sodium azide, 50% glycerol, pH7.2

### Molecular Weight:

~ 113 kDa

### Swiss-Prot:

Q12860

### Purification&Purity:

The antibody was affinity-purified from rabbit antiserum by affinity-chromatography using epitope-specific immunogen and the purity is > 95% (by SDS-PAGE).

### Applications:

WB: 1:500~1:1000

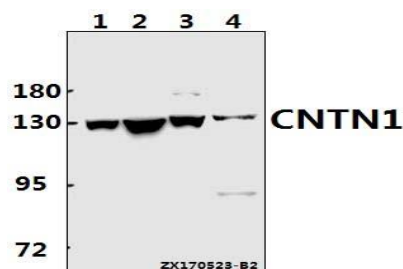
### Storage&Stability:

Store at 4 °C short term. Aliquot and store at -20 °C long term. Avoid freeze-thaw cycles.

### Specificity:

CNTN1 polyclonal antibody detects endogenous levels of CNTN1 protein.

### DATA:



Western blot (WB) analysis of CNTN1 polyclonal antibody at 1:500 dilution

Lane1:A549 whole cell lysate(40ug)

Lane2:HEK293T whole cell lysate(40ug)

Lane3:C6 whole cell lysate(40ug)

Lane4:MEF whole cell lysate(40ug)

### Note:

For research use only, not for use in diagnostic procedure.

### Bioworld Technology, Inc.

Add: 1660 South Highway 100, Suite 500 St. Louis Park, MN 55416, USA.

Email: [info@bioworld.com](mailto:info@bioworld.com)

Tel: 6123263284

Fax: 6122933841

### Bioworld technology, co. Ltd.

Add: No 9, weidi road Qixia District Nanjing, 210046, P. R. China.

Email: [info@biogot.com](mailto:info@biogot.com)

Tel: 0086-025-68037686

Fax: 0086-025-68035151