

PDIK1L polyclonal antibody

Catalog: BS61727

Host: Rabbit

Reactivity: Human

BackGround:

A 4301-bp cDNA from a human foetal brain cDNA library by high-throughput cDNA sequencing. It encodes a protein of 341 amino acids, which shows 69% identity with the human kinase CLIK1 (AAL99353), which was suggested to be the CLP-36 interacting kinase.

Product:

Rabbit IgG, 1mg/ml in PBS with 0.02% sodium azide, 50% glycerol, pH7.2

Molecular Weight:

~ 38 kDa

Swiss-Prot:

Q8N165

Purification&Purity:

The antibody was affinity-purified from rabbit antiserum by affinity-chromatography using epitope-specific immunogen and the purity is > 95% (by SDS-PAGE).

Applications:

WB: 1:500~1:1000

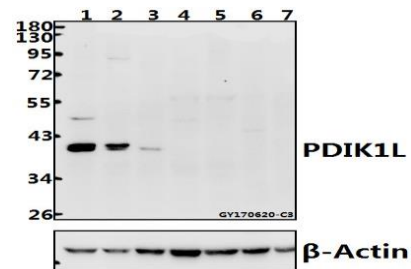
Storage&Stability:

Store at 4 °C short term. Aliquot and store at -20 °C long term. Avoid freeze-thaw cycles.

Specificity:

PDIK1L polyclonal antibody detects endogenous levels of PDIK1L protein.

DATA:



Western blot (WB) analysis of PDIK1L polyclonal antibody at 1:500 dilution

Lane1:L02 whole cell lysate(40ug)

Lane2:HEK293T whole cell lysate(40ug)

Lane3:COS-7 whole cell lysate(40ug)

Lane4:CT26 whole cell lysate(40ug)

Lane5:C6 whole cell lysate(40ug)

Lane6:The Kindey tissue lysate of Mouse(40ug)

Lane7:The Kindey tissue lysate of Rat(40ug)

Note:

For research use only, not for use in diagnostic procedure.

Bioworld Technology, Inc.

Add: 1660 South Highway 100, Suite 500 St. Louis Park, MN 55416, USA.

Email: info@bioworld.com

Tel: 6123263284

Fax: 6122933841

Bioworld technology, co. Ltd.

Add: No 9, weidi road Qixia District Nanjing, 210046, P. R. China.

Email: info@biogot.com

Tel: 0086-025-68037686

Fax: 0086-025-68035151