

CD6 polyclonal antibody

Catalog: BS61731

Host: Rabbit

Reactivity: Human, Mouse, Rat

Background:

CD6 is a type I transmembrane glycoprotein that is present on mature thymocytes, peripheral T cells and a subset of B cells. The CD6 glycoprotein is tyrosine phosphorylated during TCR-mediated T-cell activation and the size difference between the CD6 forms is due in part to differences in phosphorylation state. CD6 protein contains a 24-amino acid signal sequence, 3 extracellular "scavenger receptor cysteine-rich" (SRCR) domains, a membrane-spanning domain, and a 44-amino acid cytoplasmic domain. CD6 shows significant homology to CD5. CD6, which is also found in brain and B cell chronic lymphocytic leukemias, plays an important role in interactions of thymocytes with thymic epithelial cells. CD6 molecules can physically associate with the TCR/CD3 complex.

Product:

Rabbit IgG, 1mg/ml in PBS with 0.02% sodium azide, 50% glycerol, pH7.2

Molecular Weight:

~ 71 kDa

Swiss-Prot:

P30203

Purification&Purity:

The antibody was affinity-purified from rabbit antiserum by affinity-chromatography using epitope-specific immunogen and the purity is > 95% (by SDS-PAGE).

Applications:

WB: 1:500~1:1000

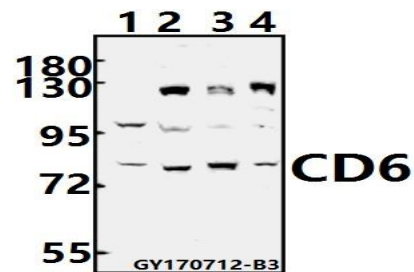
Storage&Stability:

Store at 4 °C short term. Aliquot and store at -20 °C long term. Avoid freeze-thaw cycles.

Specificity:

CD6 polyclonal antibody detects endogenous levels of CD6 protein.

DATA:



Western blot (WB) analysis of CD6 polyclonal antibody at 1:500 dilution

Lane1: Jurkat whole cell lysate(40ug)

Lane2: MCF-7 whole cell lysate(40ug)

Lane3: H9C2 whole cell lysate(40ug)

Lane4: AML-12 whole cell lysate(40ug)

Note:

For research use only, not for use in diagnostic procedure.

Bioworld Technology, Inc.

Add: 1660 South Highway 100, Suite 500 St. Louis Park, MN 55416, USA.

Email: info@bioworld.com

Tel: 6123263284

Fax: 6122933841

Bioworld technology, co. Ltd.

Add: No 9, weidi road Qixia District Nanjing, 210046, P. R. China.

Email: info@biogot.com

Tel: 0086-025-68037686

Fax: 0086-025-68035151