

## CNNM2 polyclonal antibody

Catalog: BS61771

Host: Rabbit

Reactivity: Human, Mouse, Rat

### BackGround:

Cyclin M2 is a protein in humans that is encoded by the CNNM2 gene. This gene encodes a member of the ancient conserved domain containing protein family. Members of this protein family contain a cyclin box motif and have structural similarity to the cyclins. The encoded protein may play an important role in magnesium homeostasis by mediating the epithelial transport and renal reabsorption of Mg<sup>2+</sup>. Mutations in this gene are associated with renal hypomagnesemia. Alternatively spliced transcript variants encoding multiple isoforms have been observed for this gene.

### Product:

Rabbit IgG, 1mg/ml in PBS with 0.02% sodium azide, 50% glycerol, pH7.2

### Molecular Weight:

~ 96 kDa

### Swiss-Prot:

Q9H8M5

### Purification&Purity:

The antibody was affinity-purified from rabbit antiserum by affinity-chromatography using epitope-specific immunogen and the purity is > 95% (by SDS-PAGE).

### Applications:

WB: 1:500~1:1000

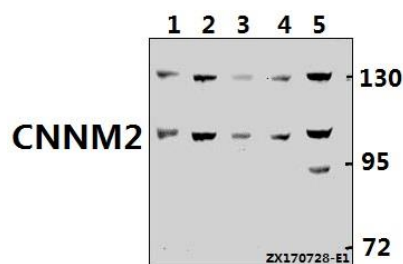
### Storage&Stability:

Store at 4 °C short term. Aliquot and store at -20 °C long term. Avoid freeze-thaw cycles.

### Specificity:

CNNM2 polyclonal antibody detects endogenous levels of CNNM2 protein.

### DATA:



Western blot (WB) analysis of CNNM2 polyclonal antibody at 1:500 dilution

Lane1:CT26 whole cell lysate(40ug)

Lane2:U-87MG whole cell lysate(40ug)

Lane3:PC12 whole cell lysate(40ug)

Lane4:A549 whole cell lysate(40ug)

Lane5:HepG2 whole cell lysate(40ug)

### Note:

For research use only, not for use in diagnostic procedure.

### Bioworld Technology, Inc.

Add: 1660 South Highway 100, Suite 500 St. Louis Park, MN 55416, USA.

Email: [info@bioworld.com](mailto:info@bioworld.com)

Tel: 6123263284

Fax: 6122933841

### Bioworld technology, co. Ltd.

Add: No 9, weidi road Qixia District Nanjing, 210046, P. R. China.

Email: [info@biogot.com](mailto:info@biogot.com)

Tel: 0086-025-68037686

Fax: 0086-025-68035151