

DDX20 polyclonal antibody

Catalog: BS61793

Host: Rabbit

Reactivity: Human, Mouse, Rat

Background:

Spinal muscular atrophy (SMA) is an autosomal recessive neurodegenerative disease characterized by loss of motor neurons in the spinal cord. SMA is caused by deletion or loss-of-function mutations in the SMN (survival of motor neuron) gene. Gemin3, also known as DP103, DDX20, DEAD-box protein DP130 and DEAD/H box 20, is a protein product of human chromosome 1p13.2. It associates directly with SMN and is a part of the SMN complex containing Gemin2, Gemin4, Gemin5 and Gemin6, as well as several spliceosomal snRNP proteins. The SMN complex plays an essential role in spliceosomal snRNP assembly in the cytoplasm and is required for pre-mRNA splicing of the nucleus. It is found in both the cytoplasm and the nucleus. The nuclear form is concentrated in subnuclear bodies called gems (for Gemini of the coiled bodies). Gemin3 also interacts with SmB, SmD2 and SmD3. It contains the conserved motif Asp-Glu-Ala-Asp (DEAD) characteristic of DEAD-box proteins. Gemin3 is a putative RNA helicase and shows ATPase activity. It is expressed in B and T cell neuroblastoma-derived cell lines, malignant melanoma tumor, normal testis and is expressed in low levels in colon, skeletal muscle, liver, kidney and lung.

Product:

Rabbit IgG, 1mg/ml in PBS with 0.02% sodium azide, 50% glycerol, pH7.2

Molecular Weight:

~ 110 kDa

Swiss-Prot:

Q9UHI6

Purification&Purity:

The antibody was affinity-purified from rabbit antiserum by affinity-chromatography using epitope-specific immunogen and the purity is > 95% (by SDS-PAGE).

Applications:

WB: 1:500~1:1000

IHC: 1:50~1:200

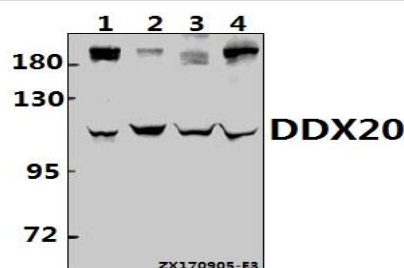
Storage&Stability:

Store at 4 °C short term. Aliquot and store at -20 °C long term. Avoid freeze-thaw cycles.

Specificity:

DDX20 pAb detects endogenous levels of DDX20 protein.

DATA:



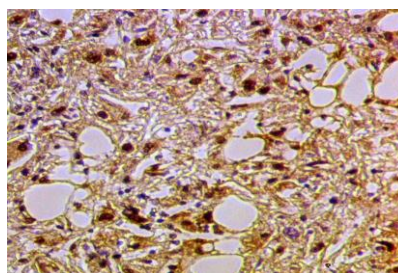
Western blot (WB) analysis of DDX20 pAb at 1:500 dilution

Lane1:A549 whole cell lysate(40ug)

Lane2:HCC827 whole cell lysate(40ug)

Lane3:H9C2 whole cell lysate(40ug)

Lane4:CT26 whole cell lysate(40ug)



Immunohistochemistry (IHC) analyzes of DDX20 polyclonal antibody in paraffin-embedded human colorectal cancer tissue at 1:50.

Note:

For research use only, not for use in diagnostic procedure.

Bioworld Technology, Inc.

Add: 1660 South Highway 100, Suite 500 St. Louis Park, MN 55416, USA.

Email: info@bioworld.com

Tel: 6123263284

Fax: 6122933841

Bioworld technology, co. Ltd.

Add: No 9, weidi road Qixia District Nanjing, 210046, P. R. China.

Email: info@biogot.com

Tel: 0086-025-68037686

Fax: 0086-025-68035151



PRODUCT DATA SHEET

Bioworld Biotech Co., Ltd

Bioworld Technology, Inc.

Add: 1660 South Highway 100, Suite 500 St. Louis Park,
MN 55416, USA.

Email: info@bioworld.com

Tel: 6123263284

Fax: 6122933841

Bioworld technology, co. Ltd.

Add: No 9, weidi road Qixia District Nanjing, 210046,
P. R. China.

Email: info@biogot.com

Tel: 0086-025-68037686

Fax: 0086-025-68035151