

ATP6AP1 polyclonal antibody

Catalog: BS6251

Host: Rabbit

Reactivity: Human, Mouse

BackGround:

ATP6AP1 (ATPase, H⁺ transporting, lysosomal accessory protein 1), also known as 16A, CF2, Ac45, XAP3, ATP6S1, VATPS1 (vacuolar ATP synthase S1 accessory protein) or ATP6IP1, is a type I transmembrane, V-ATPase accessory protein that is predominantly expressed in endocrine and neuronal cells. ATP6AP1 is responsible for targeting the V-ATPase enzyme to specialized complex vacuolar systems. Via its cytoplasmic tail, ATP6AP1 interacts with subunits of the V₀ domain. The disruption of this interaction in osteoclasts results in impaired bone resorption, suggesting an important role for ATP6AP1 in proper osteoclastic bone resorption.

Product:

Rabbit IgG, 1mg/ml in PBS with 0.02% sodium azide, 50% glycerol, pH7.2

Molecular Weight:

~ 52 kDa

Swiss-Prot:

Q15904

Purification&Purity:

The antibody was affinity-purified from rabbit antiserum by affinity-chromatography using epitope-specific im-

munogen and the purity is > 95% (by SDS-PAGE).

Applications:

WB 1:500 - 1:2000

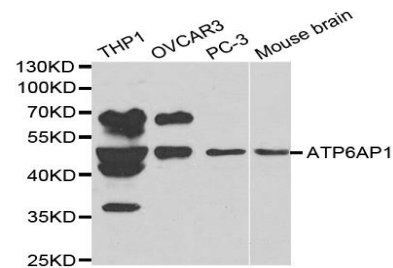
Storage&Stability:

Store at 4 °C short term. Aliquot and store at -20 °C long term. Avoid freeze-thaw cycles.

Specificity:

ATP6AP1 polyclonal antibody detects endogenous levels of ATP6AP1 protein.

DATA:



WesternBlot (WB) analysis of ATP6AP1 polyclonal antibody

Note:

For research use only, not for use in diagnostic procedure.

Bioworld Technology, Inc.

Add: 1660 South Highway 100, Suite 500 St. Louis Park, MN 55416, USA.

Email: info@bioworld.com

Tel: 6123263284

Fax: 6122933841

Bioworld technology, co. Ltd.

Add: No 9, weidi road Qixia District Nanjing, 210046, P. R. China.

Email: info@biogot.com

Tel: 0086-025-68037686

Fax: 0086-025-68035151