

CARS polyclonal antibody

Catalog: BS6497

Host: Rabbit

Reactivity: Human, Mouse, Rat

BackGround:

Aminoacyl-tRNA synthetases consist of a family of enzymes that catalyze the specific aminoacylation of tRNA by their cognate amino acid in the initial step of ribosome-dependent protein biosynthesis. Cytoplasmic CysRS (CysteinyI-tRNA synthetase, cytoplasmic), also known as CARS, is a 748 amino acid member of the class-I aminoacyl-tRNA synthetase protein family. Cytoplasmic CysRS is a monomeric protein that binds one zinc ion per subunit for use as a cofactor. Cytoplasmic CysRS uses ATP to convert L-cysteine and tRNA(Cys) into ADP, a diphosphate and L-cysteinyI-tRNA(Cys). A chromosomal aberration of the gene that encodes Cytoplasmic CysRS is associated with inflammatory myofibroblastic tumors (IMTs). Cytoplasmic CysRS is expressed as two isoforms produced by alternative splicing events.

Product:

Rabbit IgG, 1mg/ml in PBS with 0.02% sodium azide, 50% glycerol, pH7.2

Molecular Weight:

~ 85 kDa

Swiss-Prot:

P49589

Purification&Purity:

The antibody was affinity-purified from rabbit antiserum

by affinity-chromatography using epitope-specific immunogen and the purity is > 95% (by SDS-PAGE).

Applications:

WB 1:500 - 1:2000

IHC 1:50 - 1:200

IF 1:50 - 1:200

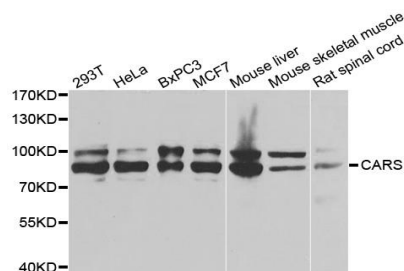
Storage&Stability:

Store at 4 °C short term. Aliquot and store at -20 °C long term. Avoid freeze-thaw cycles.

Specificity:

CARS polyclonal antibody detects endogenous levels of CARS protein.

DATA:



WesternBlot (WB) analysis of CARS polyclonal antibody

Note:

For research use only, not for use in diagnostic procedure.

Bioworld Technology, Inc.

Add: 1660 South Highway 100, Suite 500 St. Louis Park, MN 55416, USA.

Email: info@bioworld.com

Tel: 6123263284

Fax: 6122933841

Bioworld technology, co. Ltd.

Add: No 9, weidi road Qixia District Nanjing, 210046, P. R. China.

Email: info@biogot.com

Tel: 0086-025-68037686

Fax: 0086-025-68035151