

CERKL polyclonal antibody

Catalog: BS65015

Host: Rabbit

Reactivity: Human

BackGround:

CERKL, has no detectable ceramide-kinase activity. Overexpression of CERKL protects cells from apoptosis in oxidative stress conditions.

Product:

Rabbit IgG, 1mg/ml in PBS with 0.02% sodium azide, 50% glycerol, pH7.4.

Molecular Weight:

~ 62 kDa

Swiss-Prot:

Q49MI3

Purification&Purity:

The antibody was affinity-purified from rabbit antiserum by affinity-chromatography using epitope-specific immunogen and the purity is > 95% (by SDS-PAGE).

Applications:

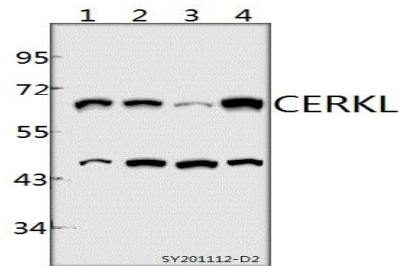
WB: 1:500~1:2000

Storage&Stability:

Store at 4 °C short term. Aliquot and store at -20 °C long term. Avoid freeze-thaw cycles.

Specificity:

CERKL polyclonal antibody detects endogenous levels of CERKL protein.

DATA:

Western blot (WB) analysis of CERKL polyclonal antibody at 1:5000 dilution

Lane1:HCT116 whole cell lysate(40ug)

Lane2:SGC7901 whole cell lysate(40ug)

Lane3:A549 whole cell lysate(40ug)

Lane4:HEK293T whole cell lysate(40ug)

Note:

For research use only, not for use in diagnostic procedure.

Bioworld Technology, Inc.

Add: 1660 South Highway 100, Suite 500 St. Louis Park, MN 55416, USA.

Email: info@bioworld.com

Tel: 6123263284

Fax: 6122933841

Bioworld technology, co. Ltd.

Add: No 9, weidi road Qixia District Nanjing, 210046, P. R. China.

Email: info@biogot.com

Tel: 0086-025-68037686

Fax: 0086-025-68035151