

## BCAP31 polyclonal antibody

Catalog: BS65019

Host: Rabbit

Reactivity: Human, Mouse

### BackGround:

BAP31 (B-cell receptor-association protein 31) is a transmembrane protein associated with the endoplasmic reticulum (ER) and ER-Golgi intermediates and has been implicated in protein trafficking and apoptosis. During apoptosis Bap31 is cleaved by caspase-8 at two carboxy-terminal sites which can then direct apoptotic signals between the ER and mitochondria. Association of BAP31 with the anti-apoptotic proteins Bcl-2 or Bcl-xL could function to regulate this ER-mitochondrial pathway. Several studies have shown that BAP31 can control the trafficking of select proteins between the ER and Golgi apparatus and can affect the transport of proteins to the cell surface.

### Product:

Rabbit IgG, 1mg/ml in PBS with 0.02% sodium azide, 50% glycerol, pH7.2.

### Molecular Weight:

~ 28 kDa

### Swiss-Prot:

P51572

### Purification&Purity:

The antibody was affinity-purified from rabbit antiserum by affinity-chromatography using epitope-specific immunogen and the purity is > 95% (by SDS-PAGE).

### Applications:

WB: 1:500~1:1000

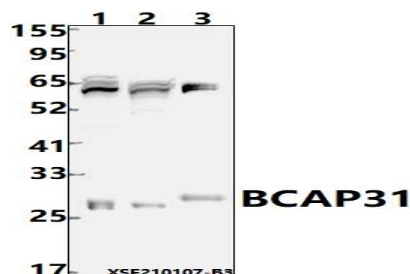
### Storage&Stability:

Store at 4 °C short term. Aliquot and store at -20 °C long term. Avoid freeze-thaw cycles.

### Specificity:

BCAP31 polyclonal antibody detects endogenous levels of BCAP31 protein.

### DATA:



Western blot (WB) analysis of BCAP31 polyclonal antibody at 1:500 dilution

Lane1:THP-1 whole cell lysate(40ug)

Lane2:HepG2 whole cell lysate(40ug)

Lane3:The lung tissue lysate of Mouse(40ug)

### Note:

For research use only, not for use in diagnostic procedure.

### Bioworld Technology, Inc.

Add: 1660 South Highway 100, Suite 500 St. Louis Park, MN 55416, USA.

Email: [info@bioworld.com](mailto:info@bioworld.com)

Tel: 6123263284

Fax: 6122933841

### Bioworld technology, co. Ltd.

Add: No 9, weidi road Qixia District Nanjing, 210046, P. R. China.

Email: [info@biogot.com](mailto:info@biogot.com)

Tel: 0086-025-68037686

Fax: 0086-025-68035151