

BUB1 polyclonal antibody

Catalog: BS6538

Host: Rabbit

Reactivity: Human, Mouse, Rat

BackGround:

Human cells contain two related protein kinases, BUB1 and BUBR1, that appear to have evolved from a single ancestral BUB1 gene. Both kinases are concentrated near the surface of the kinetochore where they monitor kinetochore-microtubule interactions. BUB1 and BUBR1 bind to kinetochores and are postulated to be components of the mitotic checkpoint, which monitors kinetochore activities to determine if chromosomes have achieved alignment at the spindle equator. BUBR1 is essential for normal mitotic progression as it prevents cells from prematurely entering anaphase. BUB3 is a conserved component of the mitotic spindle assembly complex and is also involved with the essential spindle checkpoint pathway that operates during early embryogenesis.

Product:

Rabbit IgG, 1mg/ml in PBS with 0.02% sodium azide, 50% glycerol, pH7.2

Molecular Weight:

~ 122 kDa

Swiss-Prot:

O43683

Purification&Purity:

The antibody was affinity-purified from rabbit antiserum by affinity-chromatography using epitope-specific im-

munogen and the purity is > 95% (by SDS-PAGE).

Applications:

WB 1:500 - 1:2000

IHC 1:50 - 1:200

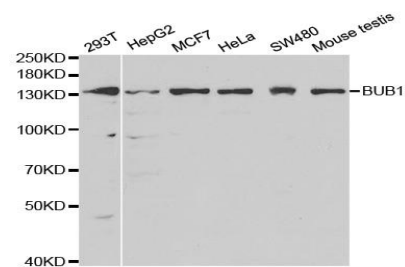
Storage&Stability:

Store at 4 °C short term. Aliquot and store at -20 °C long term. Avoid freeze-thaw cycles.

Specificity:

BUB1 polyclonal antibody detects endogenous levels of BUB1 protein.

DATA:



Western blot analysis of BUB1 polyclonal antibody

Note:

For research use only, not for use in diagnostic procedure.

Bioworld Technology, Inc.

Add: 1660 South Highway 100, Suite 500 St. Louis Park, MN 55416, USA.

Email: info@bioworld.com

Tel: 6123263284

Fax: 6122933841

Bioworld technology, co. Ltd.

Add: No 9, weidi road Qixia District Nanjing, 210046, P. R. China.

Email: info@biogot.com

Tel: 0086-025-68037686

Fax: 0086-025-68035151