

Albumin polyclonal antibody

Catalog: BS66183

Host: Rabbit

Reactivity: Human, Mouse

BackGround:

Serum albumin (ALB), the main protein in plasma, has a very good binding capacity for water, fatty acids, calcium, sodium, bilirubin, hormones, potassium and drugs. The primary function of ALB is to regulate the colloidal osmotic pressure of blood. Albumin is synthesized in the liver as prealbumin, which has an N-terminal peptide that is removed before the nascent protein is released from the rough endoplasmic reticulum. The product, proalbumin, is in turn cleaved in the Golgi vesicles to produce the secreted form of albumin. Mutations in the ALB gene may result in familial dysalbuminemic hyperthyroxinemia (FDH), a form of euthyroid hyperthyroxinemia that is due to increased affinity of ALB for T4. FDH is the most common cause of inherited euthyroid hyperthyroxinemia in Caucasian populations.

Product:

Rabbit IgG, 1mg/ml in PBS with 0.02% sodium azide, 50% glycerol, pH7.2

Molecular Weight:

~ 69 kDa

Swiss-Prot:

P02768

Purification&Purity:

The antibody was affinity-purified from rabbit antiserum by affinity-chromatography using epitope-specific immunogen and the purity is > 95% (by SDS-PAGE).

Applications:

WB, 1:500 - 1:1000 | IF/ICC, 1:50 - 1:200

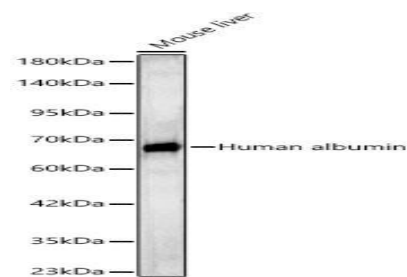
Storage&Stability:

Store at 4 °C short term. Aliquot and store at -20 °C long term. Avoid freeze-thaw cycles.

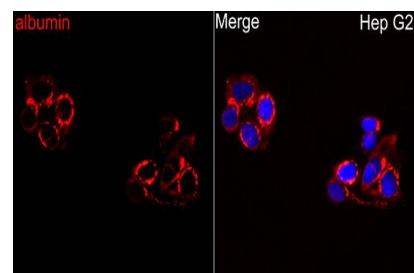
Specificity:

Albumin polyclonal antibody detects endogenous levels of Albumin protein.

DATA:



Western blot analysis of lysates from Mouse liver using albumin pAb at 1:1000 dilution.



Immunofluorescence analysis of Hep G2 cells using albumin pAb at dilution of 1:200 (40x lens).

Note:

For research use only, not for use in diagnostic procedure.

Bioworld Technology, Inc.

Add: 1660 South Highway 100, Suite 500 St. Louis Park, MN 55416, USA.

Email: info@bioworld.com

Tel: 6123263284

Fax: 6122933841

Bioworld technology, co. Ltd.

Add: No 9, weidi road Qixia District Nanjing, 210046, P. R. China.

Email: info@biogot.com

Tel: 0086-025-68037686

Fax: 0086-025-68035151