

## CCL25 polyclonal antibody

Catalog: BS6651

Host: Rabbit

Reactivity: Human, Mouse, Rat

### Background:

Chemokines are likely to play an important role in regulating the trafficking of developing T cells within the thymus. Chemokine C-C thymus expressed chemokine (TECK), also designated chemokine ligand 25 (CCL25), small inducible cytokine A25, chemokine b-15 or CK b-15, is expressed predominantly in thymic dendritic cells, thymic epithelial cells and in the small intestine. TECK, a CCR9 ligand, has suppressive activity against immature subsets of myeloid progenitors which have been stimulated to proliferate by multiple growth factors. TECK delivers signals through CCR9, which is important for the navigation of developing thymocytes. Bone marrow pre-pro-B cells and cells capable of generating pro-B colonies in the presence of interleukin-7 and Flt-3 ligand migrate to TECK, a response lost in later stages of B cell development.

### Product:

Rabbit IgG, 1mg/ml in PBS with 0.02% sodium azide, 50% glycerol, pH7.2

### Molecular Weight:

~ 17 kDa

### Swiss-Prot:

O15444

### Purification&Purity:

The antibody was affinity-purified from rabbit antiserum by affinity-chromatography using epitope-specific immunogen and the purity is > 95% (by SDS-PAGE).

### Applications:

WB: 1:500~1:1000

IHC-P: 1:100~1:500

### Storage&Stability:

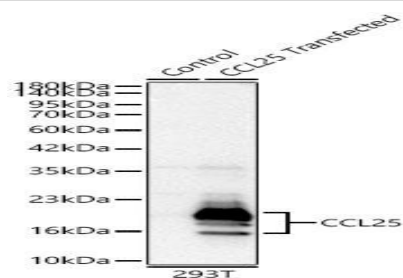
Store at 4 °C short term. Aliquot and store at -20 °C long term. Avoid freeze-thaw cycles.

### Specificity:

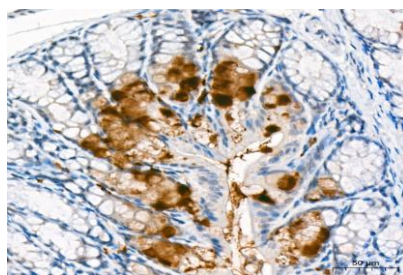
CCL25 polyclonal antibody detects endogenous levels of

CCL25 protein.

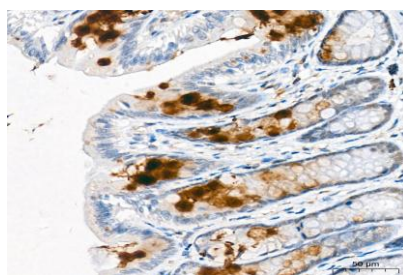
### DATA:



Western blot analysis of lysates from wild type (WT) and 293T cells transfected with CCL25 using CCL25 pAb at 1:1000 dilution.



Immunohistochemistry analysis of CCL25 in paraffin-embedded Mouse large intestine tissue using CCL25 pAb at a dilution of 1:300 (40x lens).



Immunohistochemistry analysis of CCL25 in paraffin-embedded Rat large intestine tissue using CCL25 pAb at a dilution of 1:300 (40x lens).

### Note:

For research use only, not for use in diagnostic procedure.

### Bioworld Technology, Inc.

Add: 1660 South Highway 100, Suite 500 St. Louis Park, MN 55416, USA.

Email: [info@bioworld.com](mailto:info@bioworld.com)

Tel: 6123263284

Fax: 6122933841

### Bioworld technology, co. Ltd.

Add: No 9, weidi road Qixia District Nanjing, 210046, P. R. China.

Email: [info@biogot.com](mailto:info@biogot.com)

Tel: 0086-025-68037686

Fax: 0086-025-68035151



## PRODUCT DATA SHEET

Bioworld Biotech Co., Ltd

---

---

### **Bioworld Technology, Inc.**

**Add:** 1660 South Highway 100, Suite 500 St. Louis Park,  
MN 55416, USA.

**Email:** [info@bioworld.com](mailto:info@bioworld.com)

**Tel:** 6123263284

**Fax:** 6122933841

### **Bioworld technology, co. Ltd.**

**Add:** No 9, weidi road Qixia District Nanjing, 210046,  
P. R. China.

**Email:** [info@biogot.com](mailto:info@biogot.com)

**Tel:** 0086-025-68037686

**Fax:** 0086-025-68035151