

## BAG1 polyclonal antibody

Catalog: BS6821

Host: Rabbit

Reactivity: Human, Mouse

### BackGround:

A Bcl-2-binding protein, designated Bag-1, lacks significant homology with Bcl-2 or with other Bcl-2-related proteins. Bag-1 appears to function to enhance Bcl-2 protection from cell death, suggesting that Bag-1 represents a new type of anti-cell death gene. This also suggests that certain routes of apoptosis induction, previously ascribed to Bcl-2-independent pathways, may instead reflect a requirement for a combination of Bcl-2 and Bag-1.

### Product:

Rabbit IgG, 1mg/ml in PBS with 0.02% sodium azide, 50% glycerol, pH7.2

### Molecular Weight:

~ 43 kDa

### Swiss-Prot:

Q99933

### Purification&Purity:

The antibody was affinity-purified from rabbit antiserum by affinity-chromatography using epitope-specific immunogen and the purity is > 95% (by SDS-PAGE).

### Applications:

WB: 1:500~1:2000

IHC/IF: 1:50~1:200

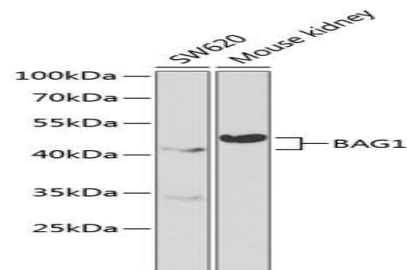
### Storage&Stability:

Store at 4 °C short term. Aliquot and store at -20 °C long term. Avoid freeze-thaw cycles.

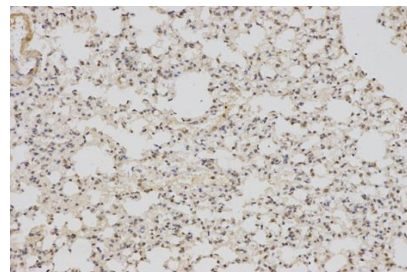
### Specificity:

BAG1 polyclonal antibody detects endogenous levels of BAG1 protein.

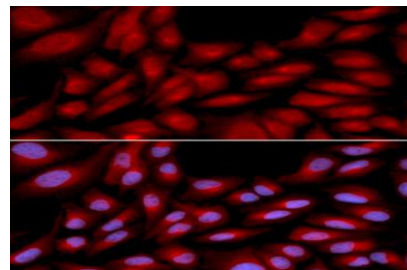
### DATA:



Western blot (WB) analysis of BAG1 polyclonal antibody



Immunohistochemistry (IHC) analysis of BAG1 polyclonal antibody in paraffin-embedded Mouse Lung tissue.



Immunofluorescence analysis of U2OS cells, using BAG1 polyclonal antibody

### Note:

For research use only, not for use in diagnostic procedure.

### Bioworld Technology, Inc.

Add: 1660 South Highway 100, Suite 500 St. Louis Park, MN 55416, USA.

Email: [info@bioworld.com](mailto:info@bioworld.com)

Tel: 6123263284

Fax: 6122933841

### Bioworld technology, co. Ltd.

Add: No 9, weidi road Qixia District Nanjing, 210046, P. R. China.

Email: [info@biogot.com](mailto:info@biogot.com)

Tel: 0086-025-68037686

Fax: 0086-025-68035151