

## CD200 polyclonal antibody

Catalog: BS6871

Host: Rabbit

Reactivity: Human, Mouse, Rat

### Background:

CD200R2 (cell surface glycoprotein CD200 receptor 2), also known as CD200R1L (cell surface glycoprotein CD200 receptor 1-like), CD200RLa or cell surface glycoprotein OX2 receptor 2, is a 271 amino acid single-pass type I membrane protein that contains one Ig-like C2-type (immunoglobulin-like) domain and one Ig-like V-type (immunoglobulin-like) domain, and belongs to the CD200R family. Existing as two alternatively spliced isoforms, CD200R2 may be a receptor for the CD200/OX2 cell surface glycoprotein. The gene that encodes CD200R2 consists of approximately 31,148 bases and maps to human chromosome 3q13.2. Chromosome 3 houses over 1,100 genes, including a chemokine receptor (CKR) gene cluster and a variety of human cancer-related gene loci.

### Product:

Rabbit IgG, 1mg/ml in PBS with 0.02% sodium azide, 50% glycerol, pH7.2

### Molecular Weight:

~ 55 kDa

### Swiss-Prot:

P41217

### Purification&Purity:

The antibody was affinity-purified from rabbit antiserum by affinity-chromatography using epitope-specific immunogen and the purity is > 95% (by SDS-PAGE).

### Applications:

WB 1:500 - 1:2000

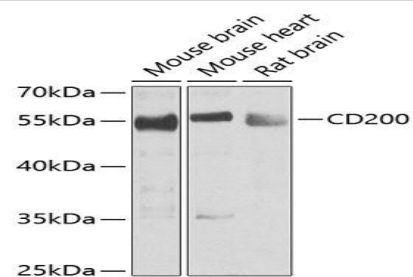
### Storage&Stability:

Store at 4 °C short term. Aliquot and store at -20 °C long term. Avoid freeze-thaw cycles.

### Specificity:

CD200 polyclonal antibody detects endogenous levels of CD200 protein.

### DATA:



Western blot analysis of extracts of mouse brain, using CD200 antibody.

### Note:

For research use only, not for use in diagnostic procedure.

### Bioworld Technology, Inc.

Add: 1660 South Highway 100, Suite 500 St. Louis Park, MN 55416, USA.

Email: [info@bioworld.com](mailto:info@bioworld.com)

Tel: 6123263284

Fax: 6122933841

### Bioworld technology, co. Ltd.

Add: No 9, weidi road Qixia District Nanjing, 210046, P. R. China.

Email: [info@biogot.com](mailto:info@biogot.com)

Tel: 0086-025-68037686

Fax: 0086-025-68035151