

CRHBP polyclonal antibody

Catalog: BS6948

Host: Rabbit

Reactivity: Human, Mouse, Rat

Background:

Response to stress in mammals requires an intact hypothalamic-pituitary-adrenal axis. The proximal part of the response is mediated by secretion of corticotropin-releasing hormone (CRH) by the paraventricular nucleus of the hypothalamus. CRH is a 41 amino acid peptide derived by enzymatic cleavage from a 191 amino acid preprohormone. CRH is produced not only in the hypothalamus but also in peripheral tissues, such as T lymphocytes; it is highly expressed in human placenta. Glucocorticoids stimulate placental CRH synthesis and secretion in primary cultures of human placenta. This stimulation is in contrast to the glucocorticoid suppression of CRH expression in hypothalamus. The gene which encodes CRH maps to human chromosome 8q13. Human plasma contains a CRH-binding protein, CRH-BP (also designated CRF-BP) which inactivates CRH and which may prevent inappropriate pituitary-adrenal stimulation in pregnancy. The gene which encodes CRF-BP maps to human chromosome 5q11.2-q13.3.

Product:

Rabbit IgG, 1mg/ml in PBS with 0.02% sodium azide, 50% glycerol, pH7.2.

Molecular Weight:

~ 37 kDa

Swiss-Prot:

P24387

Purification&Purity:

The antibody was affinity-purified from rabbit antiserum by affinity-chromatography using epitope-specific immunogen and the purity is > 95% (by SDS-PAGE).

Applications:

WB: 1:1000-1:5000

IHC-P: 1:100-1:500

IF/ICC: 1:50-1:100

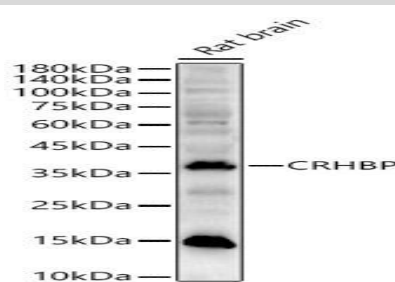
Storage&Stability:

Store at 4 °C short term. Aliquot and store at -20 °C long term. Avoid freeze-thaw cycles.

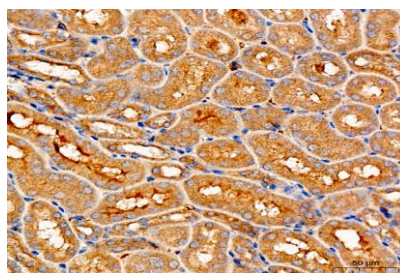
Specificity:

CRHBP polyclonal antibody detects endogenous levels of CRHBP protein.

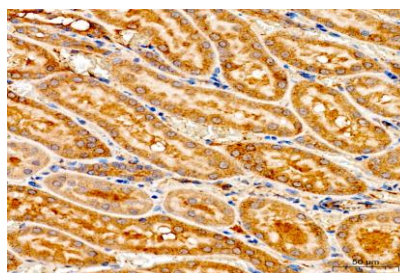
DATA:



Western blot analysis of Rat brain, using CRHBP pAb at 1:2000 dilution.



Immunohistochemistry analysis of CRHBP in paraffin-embedded mouse kidney tissue using CRHBP pAb at a dilution of 1:300 (40x lens).



Immunohistochemistry analysis of CRHBP in paraffin-embedded rat kidney tissue using CRHBP pAb at a dilution of 1:300 (40x lens).

Bioworld Technology, Inc.

Add: 1660 South Highway 100, Suite 500 St. Louis Park, MN 55416, USA.

Email: info@bioworld.com

Tel: 6123263284

Fax: 6122933841

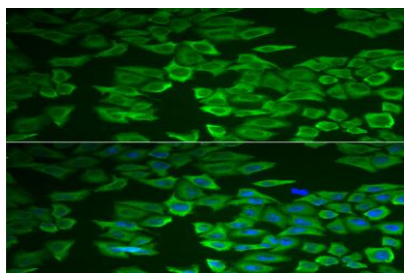
Bioworld technology, co. Ltd.

Add: No 9, weidi road Qixia District Nanjing, 210046, P. R. China.

Email: info@biogot.com

Tel: 0086-025-68037686

Fax: 0086-025-68035151



Immunofluorescence analysis of HeLa cells using CRHBP antibody.

Blue: DAPI for nuclear staining.

Note:

For research use only, not for use in diagnostic procedure.

Bioworld Technology, Inc.

Add: 1660 South Highway 100, Suite 500 St. Louis Park,
MN 55416, USA.

Email: info@bioworld.com

Tel: 6123263284

Fax: 6122933841

Bioworld technology, co. Ltd.

Add: No 9, weidi road Qixia District Nanjing, 210046,
P. R. China.

Email: info@biogot.com

Tel: 0086-025-68037686

Fax: 0086-025-68035151