

## CCL11 polyclonal antibody

Catalog: BS70816

Host: Rabbit

Reactivity: Human, Mouse, Rat

### Background:

Eotaxin (also designated eotaxin-1) is a member of the C-C or  $\beta$  family of chemokines which is characterized by a pair of adjacent cysteine residues. Eotaxin was first purified from the bronchoalveolar lavage fluid of guinea pigs challenged with an aerosol allergen, and serves as a potent chemoattractant for eosinophils. Eosinophilia is a prominent feature of several allergic conditions and is thought to be a central event in maladies such as bronchial asthma, dermatitis, conjunctivitis and possibly inflammatory bowel disease. The cognate eotaxin receptor has been identified. Originally described as mouse orphan receptor (MIP-1a receptor-like 2), CKR-3 has been shown to not only serve as the high affinity receptor for eotaxin, but also for RANTES and MCP-3. CKR-3 is expressed on the cell surface of primary eosinophils and does not bind to other members of the C-C or C-X-C family of chemokines. CKR-3 also serves as a co-receptor for a restricted subset of viruses.

### Product:

Rabbit IgG, 1mg/ml in PBS with 0.02% sodium azide, 50% glycerol, pH7.2

### Molecular Weight:

~ 20 kDa

### Swiss-Prot:

P51671

### Purification&Purity:

The antibody was affinity-purified from rabbit antiserum by affinity-chromatography using epitope-specific immunogen and the purity is > 95% (by SDS-PAGE).

### Applications:

WB 1:500 - 1:2000

IHC 1:50 - 1:200

IF 1:50 - 1:100

### Storage&Stability:

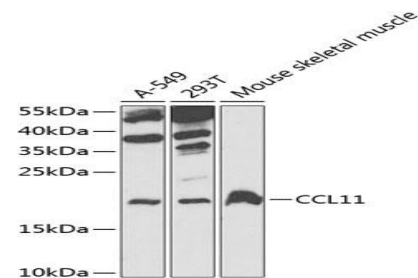
Store at 4 °C short term. Aliquot and store at -20 °C long

term. Avoid freeze-thaw cycles.

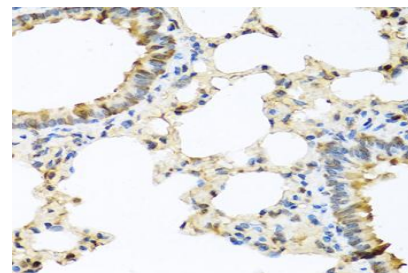
### Specificity:

CCL11 polyclonal antibody detects endogenous levels of CCL11 protein.

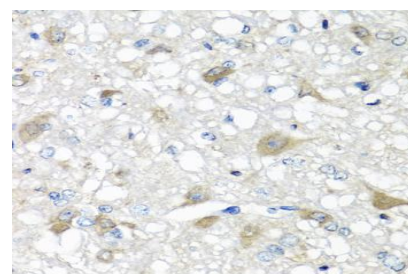
### DATA:



Western blot analysis of extracts of various cell lines, using CCL11 antibody.



Immunohistochemistry of paraffin-embedded rat brain using CCL11 antibody at dilution of 1:100 (40x lens).



Immunohistochemistry of paraffin-embedded human stomach using CCL11 antibody at dilution of 1:100 (40x lens).

### Note:

For research use only, not for use in diagnostic procedure.

### Bioworld Technology, Inc.

Add: 1660 South Highway 100, Suite 500 St. Louis Park, MN 55416, USA.

Email: [info@bioworld.com](mailto:info@bioworld.com)

Tel: 6123263284

Fax: 6122933841

### Bioworld technology, co. Ltd.

Add: No 9, weidi road Qixia District Nanjing, 210046, P. R. China.

Email: [info@biogot.com](mailto:info@biogot.com)

Tel: 0086-025-68037686

Fax: 0086-025-68035151



## PRODUCT DATA SHEET

Bioworld Technology, Inc.

---

---

### **Bioworld Technology, Inc.**

**Add:** 1660 South Highway 100, Suite 500 St. Louis Park,  
MN 55416, USA.

**Email:** [info@bioworld.com](mailto:info@bioworld.com)

**Tel:** 6123263284

**Fax:** 6122933841

### **Bioworld technology, co. Ltd.**

**Add:** No 9, weidi road Qixia District Nanjing, 210046,  
P. R. China.

**Email:** [info@biogot.com](mailto:info@biogot.com)

**Tel:** 0086-025-68037686

**Fax:** 0086-025-68035151